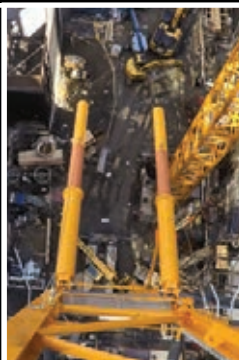


# THE WORLD CRANE GUIDE

# 2018-19



The most comprehensive  
crane reference guide  
in the world

PUBLISHED BY

**INTERNATIONAL  
CRANES**  
AND SPECIALIZED TRANSPORT

Price: US\$80.00, €60.00, £50.00





 **XCMG** G1

# XCT80

XCMG, the Pillar of China's Equipment Manufacturing Industry



Follow us:      /XCMGGroup



WEBSITE

Web: [www.xcmg.com](http://www.xcmg.com) E-mail: [export@xcmg.com](mailto:export@xcmg.com) Tel: +86-516-87739205  
XUZHOU CONSTRUCTION MACHINERY GROUP IMP. & EXP. CO., LTD



## KHL CONTACTS

## UNITED KINGDOM

KHL Group  
Southfields, Southview Road,  
Wadhurst,  
East Sussex TN5 6TP, UK.  
Tel: +44 (0)1892 784088  
Fax: +44 (0)1892 784086  
e-mail: cranes@khl.com

## USA OFFICE

KHL Group Americas  
3726 E. Ember Glow Way, Phoenix, AZ  
85050, USA.  
Tel: +1 480 659 0578  
e-mail: americas@khl.com

## SOUTH AMERICA

KHL Group Américas  
Manquehue Norte 151, of 1108.  
Las Condes, Santiago, Chile  
Tel: +56 562 2885 0321  
e-mail: cristian.peters@khl.com

## CHINA OFFICE

Beijing Representative Office,  
Room 769, Poly Plaza, No.14,  
South Dong Zhi Men Street,  
Dong Cheng District, Beijing,  
P.R. China  
Tel: +86 10 6553 6676,  
e-mail: cathy.yao@khl.com

# THE WORLD CRANE GUIDE

# 2018-19

UK/GERMANY/SPAIN/AUSTRIA/  
SWITZERLAND/EASTERN EUROPE/  
NORDIC NATIONS

Mike Posener, advertisement manager  
Tel: +353 86 043 1219  
e-mail: mike.posener@khl.com

## NETHERLANDS

Arthur Schavemaker  
Tel: +31 (0)547 275005  
e-mail: arthur@kenter.nl

## FRANCE/BELGIUM/LUXEMBOURG

Hamilton Pearman  
Tel: +33 (0)1 4593 0858  
e-mail: hpearman@wanadoo.fr

## ITALY

Fabio Potestà  
Tel: +39 010 570 4948  
e-mail: info@mediapointsrl.it

## KOREA

CH Park  
Tel: +82 (0)2 730 1234  
e-mail: mci@unitel.co.kr

## TURKEY

Emre Apa  
Tel: +90 (0)532 234 3616  
e-mail: emre.apa@apayayincilik.com.tr

## CHINA

Cathy Yao  
Tel: +86 (0)10 6553 6676  
e-mail: cathy.yao@khl.com

## JAPAN

Michihiro Kawahara  
Tel: +81 (0)3 3212 3671  
e-mail: kawahara@rayden.jp

## USA/CANADA

Matt Burk  
Tel: +1 (312) 496 3314  
e-mail: matt.burk@khl.com

## Bev O'Dell

Tel: +1 (816) 886 1858  
e-mail: bev.odell@khl.com

## VP GLOBAL SALES

Trevor Pease  
e-mail: trevor.pease@khl.com

Published by



© Copyright  
KHL Group 2018  
ISSN: 1747-700X

Printed by: Warners Midlands PLC, UK

PRICE: US\$80.00, €60.00, £50.00

## IMPORTANT NOTE

The *World Crane Guide* has been compiled by the manufacturers listed using KHL's own custom-developed online live database software to help ensure that the information contained in these pages is complete and accurate. KHL accepts no responsibility for any errors or omissions that may have resulted.

If you have equipment that is not listed in the tables in the crane guide, please contact the editor, Alex Dahm, alex.dahm@khl.com +44 (0)1892 786206 to gain access to the online updating system. This will help ensure that your equipment is listed in the next *WCG* to be compiled by the middle of next year.

Manufacturers' data contained in this directory can be updated by manufacturers at any time. The intention is that as new equipment is launched, manufacturers will add relevant data to the system, making the database a valuable tool for crane selection.



Welcome to *The World Crane Guide 2018-19*, a comprehensive worldwide listing of cranes and related equipment. This valuable tool for industry professionals contains product information from more than 100 crane manufacturers worldwide

|                          |     |
|--------------------------|-----|
| ABOUT IC                 | 5   |
| ABOUT KHL                | 7   |
| EQUIPMENT LISTINGS       | 9   |
| WHEELED MOBILE CRANES    | 9   |
| CRAWLER CRANES           | 17  |
| TOWER CRANES             | 25  |
| LOADER CRANES            | 41  |
| DOCKSIDE CRANES          | 115 |
| OFFSHORE CRANES          | 119 |
| INDUSTRIAL MOBILE CRANES | 123 |
| OVERHEAD CRANES          | 129 |
| CONTACT DETAILS          | 133 |
| MANUFACTURERS            | 134 |
| COMPONENTS AND SERVICES  | 137 |
| SUBSCRIPTIONS            | 150 |



# KOBELCO

STRENGTH THROUGH EXPERIENCE SINCE 1930

## KOBELCO G-Series

- EU Stage 4 compliant Power Plant.
- Up to 25% reduction in fuel consumption thanks to G-mode, 3 new Energy Saving Systems from KOBELCO: G-Engine, G-Winch and Auto-Idle-Stop.
- Ergonomic, luxurious, spacious cab with Joysticks.
- High precision in positioning loads.
- Unrivalled smooth operating comfort.
- Dual pump flow for clamshell, bucket or material handling\*.
- Wide, large-capacity winches improve spooling and extend wire rope life.
- Large, colour monitor with pictograms provides outstanding visibility and immediate comprehension of essential operating data.
- Fast assembly and disassembly.
- Innovative, low weight upper frame and body within 3m transport width.
- Tractor-type crawlers.\*
- Over-swing preventative device.\*
- Machine inclination sensor.\*
- Counterweight detect system.\*
- Efficient transport.
- Low maintenance.
- Excellent reliability.
- Worldwide service.

\* optional items

KOBELCO CONSTRUCTION  
MACHINERY CO., LTD.  
TOKYO, JAPAN  
Tel: +81-(0)3-5789-2121  
intl@kobelco.com

KOBELCO CONSTRUCTION  
MACHINERY MIDDLE EAST AND  
AFRICA FZCO  
Sharjah, U.A.E.  
Tel: +971-4-298-2020  
nezaki.kentaro@kobelco.com

KOBELCO CONSTRUCTION  
MACHINERY U.S.A. INC.  
Tel: +1-281-888-8430  
jack.fendrick@kobelco.com

KOBELCO INTERNATIONAL (S)  
CO., PTE. LTD.  
Singapore  
Tel: +65-(0)6268-1308  
hirakawa.takemichi@kobelco.com

KOBELCO CONSTRUCTION MACHINERY  
EUROPE B.V. FOR EUROPE, RUSSIA, CIS  
Tel: +31-(0)36-549-5510  
jos.verhulst@kobelco.com

KOBELCO CONSTRUCTION  
EQUIPMENT INDIA PVT. LTD.  
Tel: +91-120-4079900  
miyashita@kobelco.com






KOBELCO CONSTRUCTION MACHINERY  
EUROPE B.V. FOR U.K., IRELAND AND  
SOUTH AFRICA  
Tel: +44-(0)1342-301122  
mark.evans@kobelco.com

[www.kobelcocm-global.com](http://www.kobelcocm-global.com)



# Market-leading global magazine

- *International Cranes and Specialized Transport (ICST)* is the first choice of crane and transport industry equipment users and buyers worldwide.
- *ICST* is selected and supported by leading industry associations, including SC&RA, ESTA, LEEA and CICA.
- Delivering more top quality information from the most experienced editorial team.
- Being audited by the BPA Worldwide is your assurance that we target the most influential and relevant global audience.
- Offering our unique top lists:
 






- *ICST* is available to readers in their chosen format: printed, digital download via our website, e-alert, smart phone and iPad or tablet.

## Official magazine



*ICST* is the official international magazine of the Specialized Carriers & Rigging Association (SC&RA). This partnership gives readers and advertisers exclusive access to news, views and information.

European partner:

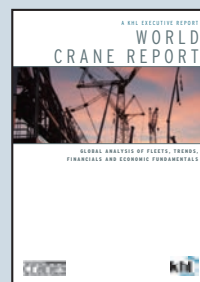
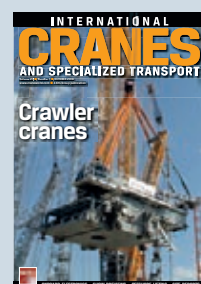


Approved media partner for:



## KHL CRANES PORTFOLIO

*ICST* has several routes to market to enable you to reach more customers. Magazine advertising is still the prime choice to promote your company's brand and products but this can be complemented by other marketing channels.



## E-NEWSLETTER

**THE Worldcrane week**  
Global news from International Cranes and Specialized Transport and American Cranes & Transport  
[www.worldcraneweek.com](http://www.worldcraneweek.com)

## WEBSITES

**CRANES & SPECIALIZED TRANSPORT**  
[www.khl.com/sectors/Cranes-and-Specialized-Transport/news](http://www.khl.com/sectors/Cranes-and-Specialized-Transport/news)

**Crane market**  
The online market place for buyers and sellers of used cranes  
[www.khlcranemarket.com](http://www.khlcranemarket.com)

## SOCIAL MEDIA



## EVENTS

**WORLD CRANE AND TRANSPORT SUMMIT 2019**  
[www.khl-wcts.com](http://www.khl-wcts.com)

**Lift & Move USA**  
[www.liftandmoveusa.com](http://www.liftandmoveusa.com)

**ESTA AWARDS OF EXCELLENCE**  
[www.khl.com/esta](http://www.khl.com/esta)

**INTERNATIONAL TOWER CRANES**  
[www.khl.com/itc](http://www.khl.com/itc)

## MEMBER OF





# HEAVY TRANSPORT AND LIFTING



2018 ESTA AWARD WINNER : Innovation

2018 SC&RA AWARDS WINNER: Rigging over 2 \$ - Rigging between 150,000 \$ - 750,000 \$



Engineering and equipment are the solution to all your heavy transport & lifting needs for the Offshore Industry:  
Towerlift and Strand Jacks - Crawler Cranes - SPMTs - Skid and Elevator System - Jack-up and Weighing System

Oil & Gas



Offshore



Power & Nuclear



Civil



Heavy Industry  
& Automotive



Salvage &  
Shipyard





# The KHL portfolio

**KHL is the largest and most-respected provider of international information for the construction and power sectors. The international group, with offices in North and South America, China, India and the UK, with supporting sales offices across the globe, offers the following products and services:**

## MAGAZINES

- Access International
- Access, Lift & Handlers
- American Cranes & Transport
- CompressorTech2
- Concrete Latin America
- Construction Europe
- Construction Latin America
- Cranes & Projects Turkey
- Diesel Progress
- Diesel Progress International
- Demolition & Recycling International
- International Construction
- International Construction Turkey
- International Cranes and Specialized Transport
- International Rental News

## NEWSLETTERS

- Access International
- Access, Lift & Handlers
- Construction Europe
- 国际建设周讯中文版
- Crane Market
- D&Ri Newsletter
- Diesel News Network
- ECT
- Engine Room News
- ERA Rental Weekly
- Informative Semanal de Construção (Portuguese)
- International Rental News
- New Power Progress
- Reporte Semanal de Construcción (Spanish)
- World Construction Week
- World Crane Week
- World Demolition Summit

[www.khl.com/subscriptions](http://www.khl.com/subscriptions)

## EXHIBITION/AWARDS/CONFERENCES

- ALH-CA
- APEX
- APEX ASIA
- Diesel Progress Summit and Awards
- European Rental Awards
- Europlatform
- ESTA Awards of Excellence
- IAPA
- International Cranes & Transport Asia Pacific
- International Cranes & Transport Latin America
- International Cranes & Transport Middle East
- International Cranes & Transport Turkey
- International Tower Cranes
- Lift & Move USA
- International Rental Conference Asia
- International Rental Exhibition (IRE)
- World Crane & Transport Summit
- World Demolition Summit
- World Demolition Awards

[www.khl-events.com](http://www.khl-events.com)

## SPECIAL REPORTS/DIRECTORIES & BENCHMARK STUDIES

[www.khl-infostore.com](http://www.khl-infostore.com)

[www.khl.com](http://www.khl.com)

**INFORMATION THAT BUILDS AND POWERS THE WORLD**

**khl**



# Experience the Progress.



## **Liebherr crawler cranes – LR Series**

- Superior lifting capacities, on-line load chart calculation
- Great variety of boom configurations
- Quick and easy assembly
- Easy and cost-effective transportation

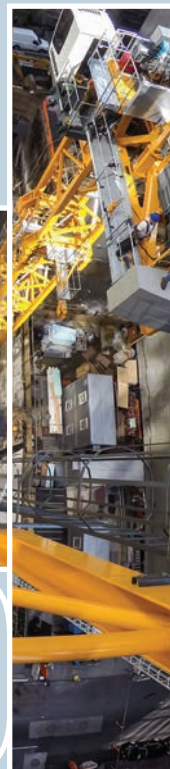
Liebherr-Werk Nenzing GmbH  
Dr. Hans Liebherr Straße 1  
6710 Nenzing, Austria  
Phone: +43 50809 41 473  
E-mail: [crawler.crane@liebherr.com](mailto:crawler.crane@liebherr.com)  
[www.facebook.com/LiebherrConstruction](http://www.facebook.com/LiebherrConstruction)  
[www.liebherr.com](http://www.liebherr.com)

# **LIEBHERR**



# THE WORLD CRANE GUIDE

# 2018-19



## CRAWLER CRANES

CRAWLER CRANES

18



# CRAWLER CRANES

| Manufacturer     | Model             | Max Load | Load at<br>Max Radius<br>(t@m) | Max Hook<br>Height<br>(m) | Boom Length<br>Min/Max<br>(m/m) | Max Main Boom<br>Extension<br>(m) | Max Travel<br>Speed<br>(m/min) | Max Ground<br>Bearing Pressure<br>(t/m²) |
|------------------|-------------------|----------|--------------------------------|---------------------------|---------------------------------|-----------------------------------|--------------------------------|--|
| Unic             | URW-094           | 1        | 0.27 @ 5.17                    | 5.6                       | 1.73 / 5.49                     | n/s                               | 36.7                           | 0.37                                     |
| Unic             | URW-095           | 1        | 0.13 @ 8.41                    | 8.8                       | 2.53 / 8.65                     | 1.3                               | 38.3                           | 0.49                                     |
| Maeda            | MC 104 CER *      | 1        | 0.2 @ 5.1                      | 5.3                       | 1.85 / 5.3                      | n/s                               | n/s                            | n/s                                      |
| Maeda            | MK 1033           | 1        | 0.18 @ 9.9                     | 10                        | 2.59 / 11.3                     | n/s                               | 33.3                           | 0.61                                     |
| Unic             | UR-W094C          | 1        | 0.65 @ 5.17                    | 5.6                       | 1.73 / 5.49                     | n/s                               | 36.7                           | 0.37                                     |
| Unic             | ECO-095           | 1        | 0.13 @ 8.41                    | 8.9                       | 2.53 / 8.65                     | 1.5                               | 30                             | n/s                                      |
| Maeda            | MC 174 CRM *      | 1.72     | 0.22 @ 5.17                    | 5.17                      | 1.83 / 5.45                     | n/s                               | 55                             | 0.34                                     |
| Unic             | URW-245           | 2.4      | 0.22 @ 5.85                    | 6.3                       | 1.98 / 6.19                     | n/s                               | 63.3                           | 0.48                                     |
| Maeda            | MC 285 CRM-E 2    | 2.82     | 0.15 @ 8.21                    | 8.21                      | 2.54 / 8.58                     | n/s                               | 33.3                           | 0.54                                     |
| Unic             | URW-295           | 2.9      | 0.13 @ 8.41                    | 8.8                       | 2.53 / 8.65                     | 1.3                               | 38.3                           | 0.49                                     |
| Unic             | URW-376           | 2.9      | 0.1 @ 14.45                    | 14.9                      | 3.63 / 14.61                    | 2                                 | 50                             | 0.37                                     |
| Unic             | Eco-295           | 2.9      | 0.13 @ 8.41                    | 8.9                       | 2.53 / 8.65                     | 1.5                               | 30                             | n/s                                      |
| Maeda            | CC 423 B          | 2.93     | 0.2 @ 8.38                     | n/s                       | n/s / 15.5                      | n/s                               | 76.7                           | 0.44                                     |
| Unic             | UR-W295C          | 2.93     | 0.55 @ 8.41                    | 8.8                       | 2.53 / 8.65                     | n/s                               | 38.3                           | 0.49                                     |
| Maeda            | LC 383 B          | 2.93     | n/s @ n/s                      | n/s                       | n/s / 8.71                      | n/s                               | 83.3                           | 0.44                                     |
| Maeda            | MC 305 CRM *      | 2.98     | 0.63 @ 7.82                    | 12.16                     | 5.95 / 12.49                    | n/s                               | 46.7                           | 0.37                                     |
| Maeda            | MC 305 CRM-E      | 2.98     | 0.63 @ 7.82                    | 12.16                     | 5.95 / 12.49                    | n/s                               | 46.7                           | 0.38                                     |
| Unic             | URW-506           | 3        | 0.15 @ 15.52                   | 16                        | 3.93 / 15.71                    | 2                                 | 50                             | 0.46                                     |
| Unic             | UR-W376C          | 3.03     | 0.3 @ 14.45                    | 14.9                      | 3.63 / 14.61                    | n/s                               | 50                             | 0.37                                     |
| Unic             | B-350.1           | 3.5      | 0.15 @ 8.65                    | 8.8                       | 2.53 / 8.65                     | 2.6                               | 38.3                           | 0.59                                     |
| Maeda            | MC 405 CRM-E      | 3.83     | 0.21 @ 16                      | 16                        | 4.74 / 16.48                    | n/s                               | 55                             | 0.50                                     |
| Maeda            | MC 405 CRM        | 3.83     | 0.21 @ 16                      | 16                        | 4.74 / 16.48                    | n/s                               | 55                             | 0.52                                     |
| Maeda            | MC 305 CRM-E2     | 3.83     | 0.63 @ 7.82                    | 12.16                     | 5.95 / 12.49                    | n/s                               | 46.7                           | 0.38                                     |
| Unic             | URW-547           | 4        | 0.05 @ 17.83                   | 18.2                      | 3.99 / 18.02                    | n/s                               | 50                             | 0.48                                     |
| Unic             | UR-W546C          | 4.05     | 0.86 @ 15.52                   | 16                        | 3.93 / 15.71                    | n/s                               | 50                             | 0.48                                     |
| Unic             | UR-W547C          | 4.05     | 0.3 @ 17.83                    | 18.2                      | 3.99 / 18.02                    | n/s                               | 50                             | 0.48                                     |
| Maeda            | CC 985            | 4.9      | 0.2 @ 14.67                    | n/s                       | n/s / 25                        | n/s                               | 53.3                           | 0.47                                     |
| Unic             | B-506-5.1         | 5        | 0.25 @ 15.7                    | 15.8                      | 3.93 / 15.71                    | 3                                 | 50                             | 0.46                                     |
| Unic             | B-506-5.2         | 5        | 0.25 @ 15.7                    | 15.8                      | 3.93 / 15.71                    | 3                                 | 50                             | 0.46                                     |
| Unic             | URW-706           | 6        | 0.2 @ 18.6                     | 19.5                      | 4.8 / 19.2                      | 3.1                               | 48.3                           | 0.44                                     |
| Maeda            | LC 1385 B         | 6        | n/s @ n/s                      | n/s                       | n/s / 22                        | n/s                               | 85                             | 0.55                                     |
| Maeda            | CC 1485           | 6        | 0.43 @ 16.1                    | n/s                       | n/s / 24.5                      | n/s                               | 53.3                           | 0.49                                     |
| Unic             | UR-W706C          | 6.05     | 1.35 @ 18.6                    | 19.5                      | 4.8 / 19.2                      | n/s                               | 48.3                           | 0.44                                     |
| Unic             | B-780.1           | 8        | 0.03 @ 8.65                    | 19.5                      | 4.8 / 19.2                      | 5                                 | 48.3                           | 0.46                                     |
| Unic             | B-780.2           | 8        | 0.03 @ 8.65                    | 19.5                      | 4.8 / 19.2                      | 3.1                               | 48.3                           | 0.46                                     |
| Unic             | B-780.3           | 8        | 0.03 @ 8.65                    | 19.5                      | 4.8 / 19.2                      | 6                                 | 48.3                           | 0.46                                     |
| Maeda            | MC 815 CRM-E      | 8.09     | 0.44 @ 18.8                    | 25.5                      | 7.22 / 19                       | n/s                               | 53.3                           | 0.54                                     |
| Unic             | URW-1006          | 10       | 0.15 @ 21.93                   | 22.8                      | 5.75 / 23.1                     | 7.87                              | 43.3                           | 0.7                                      |
| Unic             | UR-W1006C         | 10.14    | 2 @ 21.93                      | 22.8                      | 5.75 / 23.1                     | n/s                               | 43.3                           | 0.7                                      |
| Sennebogen       | 624 HD            | 13.5     | 1.2 @ 19.1                     | 19                        | 14 / 19                         | n/s                               | 41.7                           | n/s                                      |
| Sennebogen       | 613 R             | 15       | 1.1 @ 17.3                     | 20                        | 7.5 / 18.8                      | 5                                 | 36.7                           | n/s                                      |
| Marchetti        | Sherpina 25.35    | 25       | 0.5 @ 22                       | 25.1                      | n/s / 25.1                      | 33.2                              | 46.7                           | 0.57                                     |
| Tadano Mantis    | 6010              | 27       | 6 @ 24                         | n/s                       | 9 / 24                          | 12                                | 70                             | 0.74                                     |
| Tadano Mantis    | GTC-300 EX        | 27       | 1.3 @ 22                       | n/s                       | 10 / 24.4                       | 12.2                              | 66.7                           | 0.74                                     |
| Favelle Favco    | Favco 30T         | 27.5     | n/s @ n/s                      | n/s                       | 8.5 / 27.9                      | n/s                               | n/s                            | n/s                                      |
| Liebherr         | HS 8030 HD Littr. | 29.4     | n/s @ n/s                      | n/s                       | n/s / n/s                       | n/s                               | 30                             | 0.69                                     |
| Sennebogen       | 630 R- HD         | 30       | 0.5 @ 35.2                     | 31                        | 10.3 / 35.5                     | 29.9                              | 45                             | n/s                                      |
| Sennebogen       | 630 HD            | 30       | 0.5 @ 35.2                     | 35.5                      | 10.3 / 35.5                     | n/s                               | 33.3                           | n/s                                      |
| Grove            | GHC30             | 30       | 1.4 @ 22                       | 40.2                      | 10 / 25.2                       | 27                                | 50                             | 0.54                                     |
| Tadano Mantis    | GTC-350           | 31       | 1.4 @ 24                       | n/s                       | 11 / 27                         | 7                                 | 56.7                           | 0.53                                     |
| Fuwa             | QUY35             | 35       | n/s @ n/s                      | n/s                       | 10 / 40                         | 15.3                              | 22.3                           | 0.55                                     |
| Tadano Mantis    | 8012              | 36       | 1.1 @ 26                       | n/s                       | 12 / 27                         | 15.2                              | 35                             | 0.62                                     |
| Favelle Favco    | Favco 40T         | 37.3     | n/s @ n/s                      | n/s                       | 9.2 / 30.3                      | n/s                               | 64.3                           | 0.55                                     |
| Tadano Mantis    | 9010              | 40       | 5.4 @ 32                       | n/s                       | 10.3 / 32                       | 15.2                              | 35                             | 0.68                                     |
| Sennebogen       | 640 R-HD          | 40       | 0.4 @ 36                       | 41                        | 10.3 / 41.1                     | 16                                | 33.3                           | n/s                                      |
| Casagrande       | C400 XP           | 40       | 1.9 @ 29                       | n/s                       | 9 / 30                          | n/s                               | n/s                            | n/s                                      |
| Sennebogen       | 640               | 40       | 0.4 @ 36                       | 41                        | 10.3 / 41.1                     | n/s                               | 33.3                           | n/s                                      |
| Sennebogen       | 643 R             | 40       | 1.5 @ 27.1                     | 30                        | 9 / 30                          | n/s                               | 45                             | n/s                                      |
| Hitachi Sumitomo | SCX 400 T         | 40       | 1.2 @ 27                       | n/s                       | 10.06 / 32                      | 30                                | 31.7                           | 0.51                                     |
| Tadano Mantis    | GTC-400 EX        | 40       | 0.4 @ 30                       | n/s                       | 10.4 / 32                       | 15.2                              | 41.7                           | 0.68                                     |
| Liebherr         | HS 8040 HD Littr. | 43.5     | 1.2 @ 36                       | 47                        | 26 / 50                         | 26                                | 30.8                           | 0.84                                     |
| Tadano Mantis    | 10010Mx           | 45       | 5 @ 32                         | n/s                       | 11.4 / 34                       | 9                                 | 35                             | 0.75                                     |
| Grove            | GHC50             | 45       | 2.2 @ 26                       | 45.4                      | 6.5 / 30.4                      | 36                                | 41.5                           | 0.53                                     |
| Link-Belt        | TCC-500           | 45.4     | 1.1 @ 30.5                     | 50.44                     | 10.8 / 33.8                     | 15.54                             | 53.3                           | 0.62                                     |



| Manufacturer  | Model            | Max Load | Load at<br>Max Radius<br>(t@m) | Max Hook<br>Height<br>(m) | Boom Length<br>Min/Max<br>(m/m) | Max Main Boom<br>Extension<br>(m) | Max Travel<br>Speed<br>(m/min) | Max Ground<br>Bearing Pressure<br>(t/m²) |
|---------------|------------------|----------|--------------------------------|---------------------------|---------------------------------|-----------------------------------|--------------------------------|--|
| Favelle Favco | Favco 50PL       | 49       | n/s @ n/s                      | n/s                       | 15 / 42                         | n/s                               | n/s                            | n/s                                      |
| Liebherr      | HS 8050 HD Litr. | 50       | 1 @ 44                         | 47                        | 26 / 50                         | 26                                | 20.8                           | 0.91                                     |
| Sennebogen    | 1100             | 50       | 0.6 @ 46.4                     | 47                        | 10.3 / 52.3                     | 41.1                              | 25                             | n/s                                      |
| Fuwa          | QUY50A           | 50       | n/s @ n/s                      | n/s                       | 13 / 52                         | 15.3                              | 18.3                           | 0.7                                      |
| Fuwa          | QUY50C           | 50       | n/s @ n/s                      | n/s                       | 13 / 52                         | 15.3                              | 21.7                           | 0.7                                      |
| Fuwa          | QUY55            | 50       | n/s @ n/s                      | n/s                       | 13 / 52                         | 15.3                              | n/s                            | n/s                                      |
| Grove         | GHC55            | 50       | 2.2 @ 26                       | 45.4                      | 6.5 / 30.4                      | 36                                | 41.5                           | 0.53                                     |
| Sany          | SCC550E          | 55       | 1 @ 36                         | n/s                       | 13 / 52                         | 15.3                              | 20                             | 0.62                                     |
| XCMG          | QUY55            | 55       | 0.9 @ 34                       | 52                        | 13 / 52                         | 15.25                             | 22.5                           | 0.70                                     |
| Zoomlion      | ZCC550H          | 55       | 1.3 @ 34                       | n/s                       | 13 / 52                         | 28                                | 26.7                           | 0.7                                      |
| Kobelco       | 7055             | 55       | 1.1 @ 38                       | n/s                       | 9.1 / 51.8                      | 29                                | 36.7                           | 0.74                                     |
| Sennebogen    | 655 HD           | 55       | 1 @ 40.7                       | 49.5                      | 10.3 / 49.5                     | n/s                               | 33.3                           | n/s                                      |
| Fuwa          | FWX55            | 55       | 9 @ 52                         | n/s                       | 13 / 52                         | 18                                | 22.2                           | 0.63                                     |
| Fuwa          | QUY90            | 55       | n/s @ n/s                      | n/s                       | n/s / n/s                       | n/s                               | 23.3                           | 0.82                                     |
| Sany          | SCC550A          | 55       | 1.1 @ 36                       | n/s                       | 13 / 52                         | 15.25                             | 21.7                           | 0.66                                     |
| Kobelco       | TK550            | 55       | 1.45 @ 27.6                    | 30.7                      | 10 / 30                         | n/s                               | 31.7                           | 0.7                                      |
| Sany          | SCC550TB         | 55       | 1.1 @ 32                       | n/s                       | 11.3 / 42                       | 13                                | 33.3                           | 0.92                                     |
| Favelle Favco | Favco 60T        | 55       | n/s @ n/s                      | n/s                       | 10 / 32.3                       | n/s                               | n/s                            | n/s                                      |
| Fuwa          | FWT-55           | 55       | n/s @ n/s                      | n/s                       | 10.8 / 38                       | n/s                               | 21.7                           | 0.7                                      |
| Favelle Favco | Favco 60L        | 55.1     | n/s @ n/s                      | n/s                       | 15 / 54                         | n/s                               | n/s                            | n/s                                      |
| Kobelco       | CKE 600          | 60       | 1.2 @ 38                       | n/s                       | 9.1 / 51.8                      | 18.3                              | 40                             | 0.79                                     |
| Kobelco       | CKE600G          | 60       | 7 @ 20                         | n/s                       | n/s / 51.8                      | 18.3                              | 38.3                           | 0.64                                     |
| Kobelco       | CKS600           | 60       | 7 @ 12                         | n/s                       | 9.1 / 51.8                      | 18.3                              | 38.3                           | 0.64                                     |
| Sany          | SCC600E          | 60       | 1.3 @ 36                       | n/s                       | 13 / 52                         | 15.3                              | 20                             | 0.6                                      |
| Liebherr      | LTR 1060         | 60       | 1.6 @ 36                       | 40                        | 10.2 / 40                       | 16                                | 50                             | 0.86                                     |
| Fuwa          | FWT-60           | 60       | 7.5 @ 38                       | n/s                       | 10.8 / 38                       | 14                                | 41.7                           | 0.77                                     |
| Tadano Mantis | GTC-600          | 60       | 1.9 @ 33                       | n/s                       | 11.5 / 38                       | 10.1                              | 63.3                           | 0.67                                     |
| Link-Belt     | TCC-750          | 68.2     | 1.9 @ 32                       | 54.56                     | 11.7 / 35.2                     | 17.7                              | 31.7                           | 0.68                                     |
| Tadano Mantis | 15010            | 70       | 5.4 @ 26                       | n/s                       | 11.4 / 34                       | 9.14                              | 46.7                           | 0.77                                     |
| Kobelco       | CKE 700          | 70       | 1.2 @ 42                       | n/s                       | 9.1 / 54.9                      | 18.3                              | 31.7                           | 0.82                                     |
| Liebherr      | HS 8070 HD Litr. | 70       | 2.1 @ 32                       | 54                        | 29 / 56                         | 29                                | 25                             | 0.97                                     |
| Sennebogen    | 670 HD           | 70       | 0.7 @ 48.5                     | 56.9                      | 12.1 / 56.9                     | n/s                               | 31.7                           | n/s                                      |
| Fuwa          | QUY70            | 70       | n/s @ n/s                      | n/s                       | 12 / 54                         | n/s                               | 20                             | n/s                                      |
| Fuwa          | QUY70A           | 70       | n/s @ n/s                      | n/s                       | 12 / 54                         | n/s                               | n/s                            | n/s                                      |
| Marchetti     | Sherpa 70.42 L   | 70       | 0.8 @ 38                       | 42                        | 11.2 / 42                       | 58.5                              | 40                             | 0.75                                     |
| Grove         | GHC75            | 70       | 2.4 @ 32                       | 52.7                      | 8 / 36                          | 44                                | 45                             | 0.67                                     |
| Tadano Mantis | GTC-700 EX       | 70       | 1.8 @ 32                       | n/s                       | 11.4 / 34                       | 15.2                              | 46.7                           | n/s                                      |
| Terex         | HC 80            | 72       | 0.7 @ 60.9                     | 60.9                      | 12.1 / 60.9                     | 18.2                              | 33.2                           | n/s                                      |
| Link-Belt     | 138 HSL          | 72.6     | 3.2 @ 36.6                     | n/s                       | 12 / 55                         | 18.29                             | 26.8                           | 0.65                                     |
| XCMG          | QUY75            | 75       | 4 @ 30                         | 58                        | 13 / 58                         | 18                                | 20                             | 0.89                                     |
| Fuwa          | FWX75            | 75       | 9 @ 58                         | n/s                       | 13 / 58                         | 18                                | 22.2                           | 0.87                                     |
| Sany          | SCC750E          | 75       | 4.6 @ 28                       | n/s                       | 12 / 33                         | 18                                | 20                             | 0.75                                     |
| Sany          | SCC750A          | 75       | 1.2 @ 52                       | n/s                       | 12 / 57                         | 18                                | 20                             | 0.75                                     |
| Kobelco       | TK750S           | 75       | 2.7 @ 27.8                     | 30.4                      | 10 / 30                         | n/s                               | 31.7                           | 0.84                                     |
| Kobelco       | TK750FS          | 75       | 2.7 @ 27.8                     | 30.4                      | 10 / 30                         | n/s                               | 31.7                           | 0.91                                     |
| Kobelco       | CKE 800          | 80       | 1.2 @ 48.7                     | n/s                       | 9.1 / 54.9                      | 18.3                              | 31.7                           | 0.9                                      |
| Sennebogen    | 2200             | 80       | 0.6 @ 50.9                     | 53                        | 12.1 / 59.7                     | n/s                               | 31.7                           | n/s                                      |
| Manitowoc     | 8500 E-1         | 80       | n/s @ n/s                      | n/s                       | 12.2 / n/s                      | n/s                               | 28.8                           | 0.87                                     |
| Manitowoc     | 8500-1           | 80       | 1.1 @ 52                       | n/s                       | 12.2 / 61                       | 18.3                              | 28.8                           | 0.76                                     |
| XCMG          | QUY80            | 80       | 4.93 @ 30                      | 58                        | 13 / 58                         | 18                                | 20                             | 0.89                                     |
| XCMG          | QUY80E           | 80       | 4.93 @ 30                      | 58                        | 13 / 58                         | 18                                | 20                             | 0.89                                     |
| Zoomlion      | ZCC800H          | 80       | 0.8 @ 50                       | n/s                       | 13 / 58                         | 34                                | 27.8                           | 0.85                                     |
| Kobelco       | CKE800G          | 80       | 1.2 @ 48.7                     | n/s                       | 9.1 / 54.9                      | 18.3                              | 28.8                           | 0.86                                     |
| Kobelco       | BME800G          | 80       | 4.8 @ 30.3                     | n/s                       | 12.2 / 54.9                     | n/s                               | 28.3                           | 0.89                                     |
| Kobelco       | CKS800           | 80       | 7 @ 20                         | n/s                       | 9.1 / 54.9                      | 18.3                              | 28.3                           | 0.86                                     |
| Kobelco       | BMS800           | 80       | 4.8 @ 30.3                     | n/s                       | 12.2 / 54.9                     | n/s                               | 28.3                           | 0.87                                     |
| Fuwa          | QUY80A           | 80       | n/s @ n/s                      | n/s                       | 13 / 58                         | n/s                               | 21.7                           | 0.85                                     |
| Fuwa          | QUY80B           | 80       | n/s @ n/s                      | n/s                       | 13 / 58                         | n/s                               | 21.7                           | 0.82                                     |
| Sennebogen    | 683 HD           | 80       | 1.1 @ 38                       | 57                        | 10.8 / 42                       | 16                                | 41.7                           | n/s                                      |
| Tadano Mantis | GTC-800          | 80       | 1.7 @ 42                       | n/s                       | 11.4 / 43                       | 10.1                              | 56.7                           | 0.81                                     |
| Fuwa          | FWX85            | 85       | 9 @ 25                         | n/s                       | 13 / 58                         | 18                                | 31.7                           | 0.72                                     |
| Tadano Mantis | 20010            | 90       | 10 @ 26                        | n/s                       | 12.8 / 39                       | 10.6                              | 33.3                           | 0.8                                      |
| Kobelco       | CKE 900          | 90       | 5.1 @ 36                       | n/s                       | 12.2 / 61                       | 18.3                              | 31.7                           | 0.94                                     |
| Manitowoc     | 10000 E-1        | 90       | n/s @ n/s                      | n/s                       | 12.2 / n/s                      | n/s                               | 28.8                           | 1.03                                     |



# Experience the Progress.



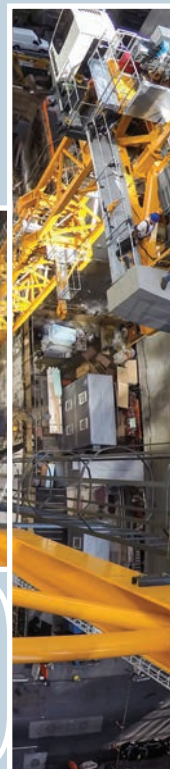
## The new EC-B crane series

Developing the new EC-B cranes, we always focused on operators, service technicians and return on investment. The result is an optimised and high-performance crane series which primarily stands for: Enhance lifting.

- Fibre version: Up to 20% more lifting capacity thanks to high-tensile fibre rope
- Cost-saving transport due to reduced jib dimension and optimised piggyback system
- TC-OS Operating System: Very simple intuitive operation reduces training and familiarisation period
- New cabin: More safety due to improved all-round view - 25% more visible surface
- Striking crane design ensures an eye-catching long-distance effect

# THE WORLD CRANE GUIDE

# 2018-19



## TOWER CRANES

|                 |    |
|-----------------|----|
| LUFFING JIB     | 26 |
| SELF ERECTING   | 29 |
| TOP SLEWING     | 32 |
| CARRIER MOUNTED | 38 |



# TOWER CRANES

## LUFFING JIB

| Manufacturer  | Model              | Max Lifting Capacity (t) | Max Radius (m) | Load at Max Radius (t) | Max load to ? Radius (m) | Max hook height (m) | Boom length Min (m) | Boom length Max (m) | Hoist Speed Max (m/min) | Max Freestanding Height (m) | Max jib angle (deg) |
|---------------|--------------------|--------------------------|----------------|------------------------|--------------------------|---------------------|---------------------|---------------------|-------------------------|-----------------------------|---------------------|
| Jost Cranes   | JTL 68.4           | 4                        | 40             | 1.5                    | 15.9                     | n/s                 | 25                  | 40                  | 32                      | 33                          | 85                  |
| Jost Cranes   | JTL 78.4           | 4                        | 40             | 1.5                    | 16.7                     | n/s                 | 25                  | 40                  | 46                      | 33                          | 85                  |
| Raimondi      | LR60               | 5                        | 36             | 1.43                   | 16                       | 64.3                | 24                  | 36                  | 90                      | 63                          | 85                  |
| Jaso          | J80PA              | 5                        | 40             | 1.3                    | 20                       | n/s                 | 25.5                | 40                  | 66                      | 76.1                        | 85                  |
| Wolff         | 100 B              | 6                        | 45             | 2                      | 20                       | n/s                 | 30                  | 45                  | 120                     | 96.7                        | n/s                 |
| Zoomlion      | L80-6S             | 6                        | 40             | 1.5                    | 18                       | 171.5               | 15                  | 40                  | 90                      | 41.6                        | 84.5                |
| Krøll         | K100L              | 6                        | 45             | 2                      | 17                       | 40                  | 28.8                | 45                  | 100                     | 39                          | 84                  |
| Jaso          | J118HPA            | 6                        | 45             | 1.6                    | 20                       | 83.8                | 30                  | 45                  | 56                      | 33                          | 85                  |
| Jaso          | J168HPA            | 6                        | 50             | 2.5                    | 25                       | 107                 | 30                  | 50                  | 56                      | 50.7                        | 85                  |
| Jost Cranes   | JTL 78.6           | 6                        | 40             | 1.5                    | 11                       | n/s                 | 25                  | 40                  | 24                      | 33                          | 85                  |
| Jost Cranes   | JTL 98.6           | 6                        | 45             | 1.4                    | 11.7                     | n/s                 | 30                  | 45                  | 24                      | 33                          | 85                  |
| Jost Cranes   | JTL 108.6          | 6                        | 45             | 1.6                    | 13.3                     | n/s                 | 30                  | 45                  | 16                      | 33                          | 85                  |
| Jost Cranes   | JTL 118.6          | 6                        | 45             | 1.8                    | 14.3                     | n/s                 | 30                  | 45                  | 24                      | 33                          | 85                  |
| Jost Cranes   | JTL 158.6          | 6                        | 50             | 2.4                    | 21.5                     | n/s                 | 27.3                | 50                  | 16                      | 39                          | 85                  |
| Favelle Favco | MK140              | 7                        | 55             | 1.75                   | 25                       | n/s                 | 27.6                | 55.2                | n/s                     | n/s                         | n/s                 |
| Wilbert       | WT 205 L e.tronic  | 8                        | 60             | 1.8                    | n/s                      | 139                 | 30                  | 60                  | 275                     | 135.8                       | n/s                 |
| Comansa       | LCL165             | 8                        | 50             | 2.3                    | 25                       | 171.3               | 30                  | 50                  | 310                     | 56.6                        | 87                  |
| Favelle Favco | TD133              | 8                        | 55             | 1.75                   | 25                       | 50.5                | 27.6                | 55.2                | 79                      | n/s                         | n/s                 |
| Yongmao       | STL120             | 8                        | 45             | 2.2                    | 18.6                     | 25.7                | n/s                 | 45                  | n/s                     | n/s                         | n/s                 |
| Jaso          | J138PA.A           | 8                        | 45             | 2.25                   | 25                       | 78.5                | 30                  | 40                  | 80                      | 76.1                        | 85                  |
| Krøll         | K125L              | 8                        | 50             | 2                      | 13                       | 55                  | 28.8                | 50                  | 120                     | 55                          | 84                  |
| Zoomlion      | L100-8             | 8                        | 50             | 1.5                    | 20                       | 131.1               | 20                  | 50                  | 130                     | 37.6                        | 84                  |
| Jost Cranes   | JTL 118.8          | 8                        | 45             | 1.7                    | 10.3                     | n/s                 | 30                  | 45                  | 25                      | 33                          | 85                  |
| Jost Cranes   | JTL 168.8          | 8                        | 50             | 2                      | 17.3                     | n/s                 | 27.3                | 50                  | 25                      | 39                          | 85                  |
| Terex         | CTL 140-10         | 10                       | 50             | 1.8                    | 15                       | 92.6                | 30                  | 50                  | 120                     | n/s                         | 85                  |
| Yongmao       | STL180             | 10                       | n/s            | 1.3                    | n/s                      | 47.7                | n/s                 | 55                  | n/s                     | n/s                         | n/s                 |
| Raimondi      | LRH174             | 10                       | 50             | 2.25                   | 20                       | 76.2                | 26                  | 50                  | 190                     | n/s                         | 85                  |
| Krøll         | K200L              | 10                       | 50             | 3.5                    | 25                       | 63                  | 28.8                | 50                  | 100                     | 63                          | 84                  |
| Jost Cranes   | JTL 168.10         | 10                       | 50             | 2.3                    | 13.4                     | n/s                 | 27.3                | 50                  | 16                      | 39                          | 85                  |
| Liebherr      | 280 HC-L 12/24 Lit | 12                       | 60             | 3.2                    | 18                       | 59.1                | 30                  | 60                  | 194                     | n/s                         | 65                  |
| Liebherr      | 280 HC-L 16/28 Lit | 12                       | 60             | 3                      | 15                       | 59.1                | 30                  | 60                  | 261                     | n/s                         | 65                  |
| Wolff         | 166 B              | 12                       | 55             | 1.8                    | 20                       | n/s                 | 25                  | 55                  | 174                     | n/s                         | n/s                 |
| Comansa       | LCL190             | 12                       | 60             | 1.3                    | 20                       | 113.2               | 30                  | 60                  | 330                     | 63.1                        | 87                  |
| Comansa       | LCL280             | 12                       | 60             | 2.6                    | 25                       | 119.5               | 30                  | 60                  | 330                     | 53.2                        | 87                  |
| Comansa       | LCL310             | 12                       | 60             | 3.2                    | 30                       | 125.3               | 30                  | 60                  | 330                     | 59                          | 87                  |
| Raimondi      | LR165              | 12                       | 55             | 1.95                   | 24                       | 105.4               | 28                  | 55                  | 136                     | n/s                         | 85                  |
| Jaso          | J180PA.A           | 12                       | 50             | 3                      | 25                       | 119.2               | 30                  | 50                  | 120                     | 67.3                        | 85                  |
| Jaso          | J180PA.2R.A        | 12                       | 50             | 2.7                    | 25                       | 119.2               | 30                  | 50                  | 183                     | 67.3                        | 85                  |
| Zoomlion      | L160-12            | 12                       | 50             | 2.74                   | 23                       | 194.5               | 25                  | 50                  | 160                     | 49.7                        | 84.5                |
| Jost Cranes   | JTL 208.12         | 12                       | 55             | 2.6                    | 17.5                     | n/s                 | 30                  | 55                  | 15                      | 48                          | 85                  |
| Jost Cranes   | JTL 218.12         | 12                       | 50             | 3.3                    | 16.6                     | n/s                 | 30                  | 50                  | 28                      | 48                          | 85                  |
| Jost Cranes   | JTL 268.12         | 12                       | 55             | 3.4                    | 20.9                     | n/s                 | 30                  | 55                  | 28                      | 51                          | 85                  |
| Jost Cranes   | JTL 318.12         | 12                       | 55             | 4.5                    | 27.4                     | n/s                 | 30                  | 55                  | 28                      | 51                          | 85                  |
| Jost Cranes   | JL 226.12          | 12                       | 60             | 2.2                    | /16.8                    | n/s                 | 30                  | 60                  | 28                      | 51                          | 85                  |
| Jost Cranes   | JL 266.12          | 12                       | 60             | 3.1                    | 20                       | n/s                 | 30                  | 60                  | 28                      | 51                          | 85                  |
| Raimondi      | LR213              | 14                       | 55             | 2.25                   | 23                       | 149.6               | 28                  | 55                  | 136                     | 42.66                       | 85                  |
| Wilbert       | WT 905 L e.tronic  | 16                       | 78             | 10                     | n/s                      | 210.5               | 36                  | 78                  | 200                     | n/s                         | n/s                 |
| Krøll         | K365L              | 16                       | 60             | 3.2                    | 25.9                     | 114                 | 27.6                | 60                  | 100                     | 48                          | n/s                 |
| Terex         | CTL 180-16         | 16                       | 55             | 2                      | 15                       | 106.3               | 30                  | 55                  | 145                     | 54                          | 85                  |
| Terex         | CDK 100-16         | 16                       | 30.3           | 3.2                    | 6                        | 29.5                | 16.5                | 30.3                | 59                      | 29.5                        | n/s                 |
| Liebherr      | 190 HC-L 8/16 Lit  | 16                       | 55             | 2.5                    | 12.5                     | 43.7                | 30                  | 55                  | 363                     | n/s                         | 70                  |
| Liebherr      | 230 HC-L 8/16 Lit  | 16                       | 60             | 1.9                    | 15                       | 64.9                | 30                  | 60                  | 363                     | n/s                         | 73                  |
| Zoomlion      | L250-16            | 16                       | 60             | 3                      | 18                       | 180.35              | 30                  | 60                  | 120                     | 52.85                       | 84.5                |
| Jost Cranes   | JTL 268.16         | 16                       | 55             | 3.3                    | 15.5                     | n/s                 | 30                  | 55                  | 40                      | 51                          | 85                  |
| Jost Cranes   | JTL 318.16         | 16                       | 55             | 4.4                    | 19.8                     | n/s                 | 30                  | 55                  | 40                      | 51                          | 85                  |
| Jost Cranes   | JL 226.16          | 16                       | 60             | 2.1                    | 13.8                     | n/s                 | 30                  | 60                  | 40                      | 51                          | 85                  |
| Jost Cranes   | JL 256.16          | 16                       | 60             | 3.1                    | 15.4                     | n/s                 | 30                  | 60                  | 21                      | 51                          | 85                  |
| Jost Cranes   | JL 266.16          | 16                       | 60             | 3                      | 15.1                     | n/s                 | 30                  | 60                  | 40                      | 51                          | 85                  |
| Jost Cranes   | JL 316.16          | 16                       | 60             | 4                      | 18.1                     | n/s                 | 30                  | 60                  | 21                      | 51                          | 85                  |
| Jost Cranes   | JL 326.16          | 16                       | 60             | 4                      | 19                       | n/s                 | 30                  | 60                  | 40                      | 51                          | 85                  |
| Jost Cranes   | JL 366.16          | 16                       | 60             | 4.4                    | 22.3                     | n/s                 | 30                  | 60                  | 40                      | 51                          | 85                  |
| Raimondi      | LR330              | 18                       | 60             | 3.3                    | 25                       | n/s                 | 30                  | 60                  | 240                     | 58.37                       | 85                  |
| Jaso          | J280PA.2R          | 18                       | 60             | 3.2                    | 25                       | 131.3               | 30                  | 60                  | 142                     | 58.2                        | n/s                 |
| Favelle Favco | M220D              | 18                       | 52.5           | 3                      | 17.5                     | n/s                 | 27.4                | 55                  | 208                     | 60                          | 76.9                |

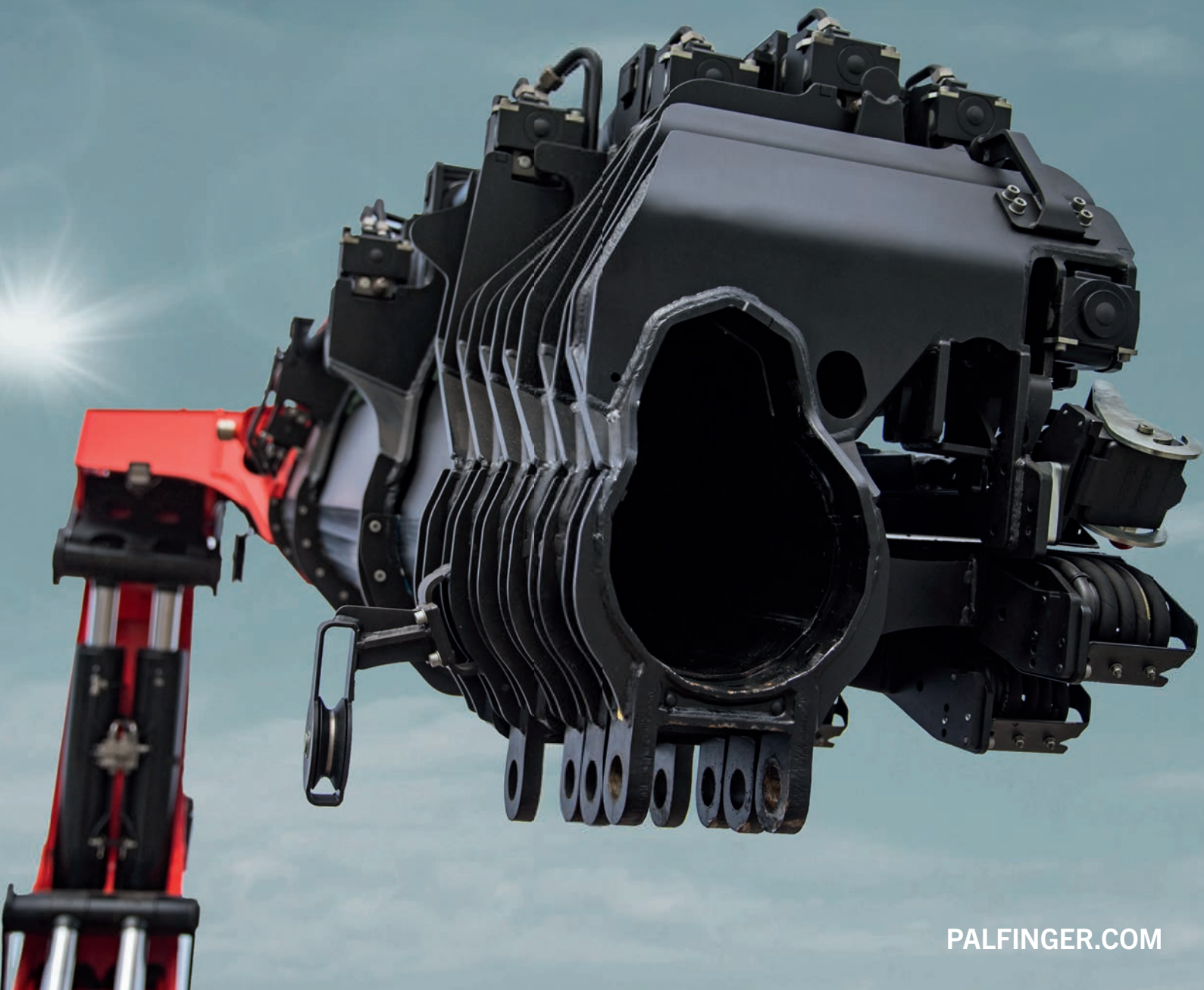
| Manufacturer  | Model              | Max                  | Max        | Load at        | Max load        | Max hook   | Boom length |         | Hoist Speed | Max                     | Max jib     |
|---------------|--------------------|----------------------|------------|----------------|-----------------|------------|-------------|---------|-------------|-------------------------|-------------|
|               |                    | Lifting Capacity (t) | Radius (m) | Max Radius (t) | to ? Radius (m) | height (m) | Min (m)     | Max (m) | Max (m/min) | Freestanding Height (m) | angle (deg) |
| Favelle Favco | MK220D             | 18                   | 52.5       | 3              | 17.5            | n/s        | 27.4        | 55      | n/s         | n/s                     | n/s         |
| Yongmao       | STL260             | 18                   | n/s        | 2.4            | n/s             | n/s        | n/s         | 60      | n/s         | n/s                     | n/s         |
| Yongmao       | STL230             | 18                   | n/s        | 2              | n/s             | n/s        | n/s         | 55      | n/s         | n/s                     | n/s         |
| Jaso          | J208PA             | 18                   | 60         | 1.7            | 18.5            | 112.3      | 30          | 60      | 74          | 62.9                    | 85          |
| Jaso          | J265PA             | 18                   | 60         | 2.2            | 20              | 123.1      | 30          | 60      | 220         | 66.8                    | 85          |
| Terex         | CTL 260-18         | 18                   | 55         | 2.9            | 15              | 103        | 30          | 55      | 130         | 58                      | 85          |
| Liebherr      | 357 HC-L 12/24 Lit | 20                   | 60         | 4.5            | 12              | 53.3       | 30          | 60      | 330         | n/s                     | 65          |
| Zoomlion      | L160-10            | 20                   | 55         | 2.2            | 23              | 185.6      | 30          | 55      | 112.5       | 46.6                    | 84.5        |
| Zoomlion      | L250-20            | 20                   | 60         | 2.7            | 16              | 165.35     | 30          | 60      | 100         | 52.85                   | 85          |
| Jost Cranes   | JL 326.20          | 20                   | 60         | 3.9            | 15.2            | n/s        | 30          | 60      | 19          | 51                      | 85          |
| Jost Cranes   | JL 366.20          | 20                   | 60         | 4.3            | 17.9            | n/s        | 30          | 60      | 19          | 51                      | 85          |
| Jost Cranes   | JL 426.20          | 20                   | 60         | 5.5            | 22              | n/s        | 30          | 60      | 19          | 54                      | 85          |
| Jost Cranes   | JL 526.20          | 20                   | 65         | 5.3            | 26.3            | n/s        | 30          | 65      | 19          | 48                      | 85          |
| Wolff         | 275 B              | 24                   | 60         | 2.4            | 17              | n/s        | 30          | 60      | 222         | n/s                     | n/s         |
| Comansa       | LCL500             | 24                   | 60         | 4.7            | 15              | 178.2      | 30          | 65      | n/s         | 68.2                    | 87          |
| Yongmao       | STL420             | 24                   | n/s        | 4.9            | n/s             | n/s        | n/s         | 60      | n/s         | n/s                     | n/s         |
| Jaso          | J280PA24.2R        | 24                   | 60         | 3              | 21              | 104.2      | 30          | 60      | 115         | 58.2                    | 85          |
| Krøll         | K435L              | 24                   | 60         | 3.2            | 17.9            | n/s        | 33.2        | 60      | 160         | n/s                     | n/s         |
| Terex         | CTL 340-24         | 24                   | 60         | 4              | 10              | 107.3      | 35          | 60      | 130         | 64.1                    | 85          |
| Terex         | CTL 430-24         | 24                   | 60         | 5.5            | 10              | 107.3      | 35          | 60      | 160         | 64.1                    | 85          |
| Liebherr      | 542 HC-L 12/24 Lit | 24                   | 65         | 4.8            | 25              | 47.5       | 30          | 65      | 261         | n/s                     | 65          |
| Jost Cranes   | JL 416.24          | 24                   | 60         | 5.1            | 18.4            | n/s        | 30          | 60      | 22          | 54                      | 85          |
| Jost Cranes   | JL 426.24          | 24                   | 60         | 5.3            | 18.1            | n/s        | 30          | 60      | 15          | 54                      | 85          |
| Jost Cranes   | JL 526.24          | 24                   | 65         | 5.1            | 21.7            | n/s        | 30          | 65      | 21          | 48                      | 85          |
| Jost Cranes   | JL 626.24          | 24                   | 65         | 7              | 28.3            | n/s        | 30          | 65      | 21          | 60                      | 85          |
| Yongmao       | STL420A            | 25                   | n/s        | 4.7            | n/s             | n/s        | n/s         | 60      | n/s         | n/s                     | n/s         |
| Liebherr      | 710 HC-L 25/50 Lit | 25                   | 65         | 7.6            | 20              | 52         | 30          | 65      | 238         | n/s                     | 65          |
| Zoomlion      | L400-25            | 25                   | 60         | 4.71           | 20              | 205.55     | 30          | 60      | 132         | 63.05                   | 85          |
| Wolff         | 355 B              | 28                   | 50         | 6.7            | 25.3            | n/s        | 30          | 60      | 185         | n/s                     | n/s         |
| Liebherr      | 357 HC-L 18/32 Lit | 28                   | 60         | 3              | 15              | 53.3       | 30          | 60      | 213         | n/s                     | 65          |
| Terex         | CTL 630B-32        | 32                   | 65         | 6.7            | 15              | 139.5      | 35          | 65      | 105         | n/s                     | 85          |
| Wilbert       | WT 1305 L e.tronic | 32                   | 78         | 14             | 42              | n/s        | 36          | 78      | 200         | 97                      | n/s         |
| Wilbert       | WT 1905 L e.tronic | 32                   | 78         | 19             | 60              | n/s        | 36          | 78      | 171         | 102                     | n/s         |
| Wilbert       | WT 2405 L e.tronic | 32                   | 78         | 19.5           | 60              | n/s        | 36          | 78      | 171         | 95.3                    | n/s         |
| Yongmao       | STL660C            | 32                   | n/s        | 6.1            | n/s             | n/s        | n/s         | 60      | n/s         | n/s                     | n/s         |
| Yongmao       | STL600             | 32                   | n/s        | 6.1            | n/s             | n/s        | n/s         | 60      | n/s         | n/s                     | n/s         |
| Yongmao       | STL460C            | 32                   | n/s        | 3.8            | n/s             | n/s        | n/s         | 60      | n/s         | n/s                     | n/s         |
| Jaso          | J438PA.2R          | 32                   | 65         | 3.4            | 20              | 111.3      | 30          | 65      | 152         | 63.8                    | 85          |
| Liebherr      | 710 HC-L 32/64 Lit | 32                   | 65         | 7.2            | 20              | 52         | 30          | 65      | 194         | n/s                     | 65          |
| Zoomlion      | L500-32            | 32                   | 60         | 6              | 18              | 350        | 30          | 60      | 90          | 57.13                   | 85          |
| Jost Cranes   | JL 616.32          | 32                   | 60         | 9.1            | 22.9            | n/s        | 30          | 60      | 22          | 63                      | 85          |
| Jost Cranes   | JL 626.32          | 32                   | 65         | 6.8            | 21.2            | n/s        | 30          | 65      | 29          | 60                      | 85          |
| Jaso          | J380PA             | 36                   | 65         | 3.5            | 15              | 116.9      | 30          | 65      | 115         | 62.1                    | 85          |
| Liebherr      | 542 HC-L 18/36 Lit | 36                   | 65         | 4.3            | 17.5            | 47.5       | 30          | 65      | 179         | n/s                     | 65          |
| Wolff         | 630 B              | 42                   | 30         | 26.5           | n/s             | n/s        | 30          | 70      | 200         | n/s                     | n/s         |
| Terex         | CTL 650F-45        | 45                   | 65         | 7              | 15              | 124.6      | 35          | 65      | 78          | 76                      | 85          |
| Wolff         | 700 B              | 50                   | 30         | 26.5           | n/s             | n/s        | 30          | 70      | 190         | n/s                     | n/s         |
| Favelle Favco | M440D              | 50                   | 65         | 2.7            | 10              | 68.6       | 32          | 68.8    | 160         | 48                      | n/s         |
| Favelle Favco | M600D              | 50                   | 70         | 3              | 15              | 73.2       | 36.6        | 73.4    | 160         | 48                      | n/s         |
| Favelle Favco | MK440D             | 50                   | 65         | 2.7            | 10              | n/s        | 32          | 68.8    | n/s         | n/s                     | n/s         |
| Favelle Favco | MK600D             | 50                   | 70         | 3              | 15              | n/s        | 36.6        | 73.4    | n/s         | n/s                     | n/s         |
| Comansa       | LCL700             | 50                   | 65         | 6              | 20              | 189.5      | 30          | 65      | 169         | 62.5                    | n/s         |
| Yongmao       | STL1400            | 50                   | n/s        | 6.3            | n/s             | n/s        | n/s         | 71      | n/s         | n/s                     | n/s         |
| Yongmao       | STL1000C           | 50                   | n/s        | 6.5            | n/s             | n/s        | n/s         | 60      | n/s         | n/s                     | n/s         |
| Yongmao       | STL1000            | 50                   | n/s        | 6.5            | n/s             | n/s        | n/s         | 60      | n/s         | n/s                     | n/s         |
| Yongmao       | STL720             | 50                   | n/s        | 9              | n/s             | n/s        | n/s         | 60      | n/s         | n/s                     | n/s         |
| Zoomlion      | L630-50            | 50                   | 60         | 9.5            | 20              | 300        | 30          | 60      | 80          | 51.65                   | 85          |
| Wolff         | 1250 B             | 60                   | 40         | 38             | n/s             | n/s        | 40          | 80      | 190         | n/s                     | n/s         |
| Favelle Favco | M760D              | 64                   | 70         | 4.4            | 10              | n/s        | 35          | 70      | 160         | 48                      | n/s         |
| Favelle Favco | M900D              | 64                   | 70         | 6.3            | 15              | n/s        | 36.6        | 73.4    | 160         | 48                      | n/s         |
| Favelle Favco | MK760D             | 64                   | 70         | 4.4            | 10              | n/s        | 35          | 70      | n/s         | n/s                     | n/s         |
| Favelle Favco | MK900D             | 64                   | 70         | 6.3            | 15              | n/s        | 36.6        | 73.4    | n/s         | n/s                     | n/s         |
| Yongmao       | STL1460C           | 64                   | n/s        | 6.3            | n/s             | n/s        | n/s         | 70      | n/s         | n/s                     | n/s         |
| Terex         | CTL 1600-66        | 66                   | 75         | 16             | 10              | 154.2      | 40          | 75      | 185         | n/s                     | 85          |



# LIFTING CAPACITY MEETS LOADING CAPACITY **THE NEW PK 135.002 TEC 7**

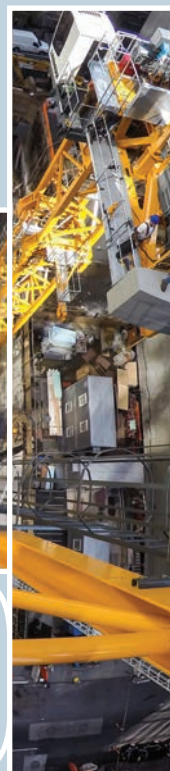
Very rigid and light – two characteristics which make the PALFINGER P-Profile unique. Combined with intelligent control systems like DPS-C or HPSC-Plus, the new PK 135.002 TEC 7 offers an outstanding ratio of lifting capacity to dead weight, leaving payload reserves on the truck.

## LIFETIME EXCELLENCE



# THE WORLD CRANE GUIDE

# 2018-19



## LOADER CRANES

LOADER CRANES

42



# LOADER CRANES

| Manufacturer | Model             | Tonne-Metre Moment (t-m) | Lifting Capacity (t) | Load @ Max Radius (t@m) | Max Hook Height (m) | Powered Boom Length (m) | Installed Weight (t) | Folded Height (m) | Power Required (kW) |
|--------------|-------------------|--------------------------|----------------------|-------------------------|---------------------|-------------------------|----------------------|-------------------|---------------------|
| HMF          | 50-T              | 0.56                     | 0.43                 | 0.25 @ 2                | n/s                 | 2                       | 0.06                 | 1.23              | n/s                 |
| Maxilift     | m 50.2            | 0.56                     | 0.5                  | 0.2 @ 2.47              | n/s                 | 2.47                    | 0.1                  | n/s               | n/s                 |
| Maxilift     | ML 50 2M          | 0.56                     | 0.5                  | 0.2 @ 2.47              | n/s                 | 2.47                    | 0.09                 | 1.06              | n/s                 |
| Palfinger    | PC 900            | 0.80                     | n/s                  | 0.45 @ 1.6              | n/s                 | 1.6                     | 0.07                 | n/s               | n/s                 |
| Hiab         | 008 T-2 PTO       | 0.99                     | 0.84                 | 0.23 @ 3.85             | n/s                 | 2.8                     | 0.16                 | n/s               | n/s                 |
| Hiab         | 008 T-1 PTO       | 1.01                     | 0.84                 | 0.23 @ 3.85             | n/s                 | 1.85                    | 0.14                 | n/s               | n/s                 |
| Hyva Crane   | HA 10 E1          | 1.01                     | 0.88                 | 0.24 @ 3.65             | n/s                 | n/s                     | 0.16                 | 1.24              | n/s                 |
| Hiab         | T-CLX 009-1       | 1.01                     | 0.87                 | 0.53 @ 1.8              | n/s                 | 1.8                     | 0.13                 | n/s               | n/s                 |
| Hiab         | T-CLX 009-2       | 1.01                     | 0.86                 | 0.34 @ 2.7              | n/s                 | 2.8                     | 0.15                 | n/s               | n/s                 |
| Ferrari      | 310 A 1           | 1.05                     | 1.08                 | 0.23 @ 3.67             | n/s                 | 1.9                     | 0.15                 | 0.6               | n/s                 |
| HMF          | 150-T1            | 1.12                     | 0.83                 | 0.2 @ 3.5               | n/s                 | 2.1                     | 0.6                  | 1.49              | n/s                 |
| HMF          | 150-T1 P          | 1.12                     | 0.83                 | 0.2 @ 3.5               | n/s                 | 2.1                     | 0.18                 | 1.5               | n/s                 |
| HMF          | 150-T2            | 1.12                     | 0.83                 | 0.2 @ 3.5               | n/s                 | 2.1                     | 0.15                 | 1.49              | n/s                 |
| HMF          | 150-T2 P          | 1.12                     | 0.83                 | 0.2 @ 3.5               | n/s                 | 2.9                     | 0.19                 | 1.5               | n/s                 |
| Amco Veba    | 601T-1 S          | 1.12                     | 0.86                 | 0.23 @ 3.67             | n/s                 | 1.9                     | 0.15                 | 1.24              | n/s                 |
| Amco Veba    | 601T-2 S          | 1.12                     | 0.8                  | 0.23 @ 3.67             | n/s                 | 2.79                    | 0.16                 | 1.24              | n/s                 |
| Maxilift     | m 110.1 H         | 1.12                     | 0.8                  | 0.54 @ 1.93             | n/s                 | 1.93                    | 0.11                 | n/s               | n/s                 |
| Maxilift     | m 110.2 H         | 1.12                     | 0.8                  | 0.37 @ 2.8              | n/s                 | 2.8                     | 1.03                 | n/s               | n/s                 |
| Maxilift     | m 110.3 H         | 1.12                     | 0.8                  | 0.25 @ 3.73             | n/s                 | 3.73                    | 0.16                 | n/s               | n/s                 |
| Maxilift     | ML 110.1          | 1.12                     | 0.99                 | 0.37 @ 2.8              | n/s                 | 2.8                     | 0.11                 | 1.21              | n/s                 |
| Maxilift     | ML 110.2          | 1.12                     | 0.99                 | 0.37 @ 2.8              | n/s                 | 2.8                     | 0.13                 | 1.21              | n/s                 |
| Maxilift     | ML 110.3          | 1.12                     | 0.99                 | 0.25 @ 3.73             | n/s                 | 3.73                    | 0.16                 | 1.21              | n/s                 |
| Atlas        | T 11 A26          | 1.12                     | 0.99                 | 0.54 @ 1.93             | n/s                 | 1.9                     | 0.11                 | 1.21              | n/s                 |
| Atlas        | T 11 A27          | 1.12                     | 0.99                 | 0.25 @ 3.73             | n/s                 | 2.8                     | 0.13                 | 1.21              | n/s                 |
| Atlas        | T 11 A28          | 1.12                     | 0.99                 | 0.2 @ 4.5               | n/s                 | 3.7                     | 0.16                 | 1.22              | n/s                 |
| Pesci        | SE 135A           | 1.16                     | 2.4                  | 0.37 @ 17.1             | n/s                 | n/s                     | 2                    | 2.19              | n/s                 |
| Fassi        | M10A.11 Teleskop  | 1.23                     | 1                    | 0.3 @ 3.55              | n/s                 | 1.9                     | 0.15                 | 1.21              | n/s                 |
| Fassi        | M10A.12 Teleskop  | 1.23                     | 1                    | 0.3 @ 3.55              | n/s                 | 2.7                     | 0.16                 | 1.21              | n/s                 |
| Hiab         | T-CLX 013-3       | 1.28                     | 0.84                 | 0.25 @ 4.2              | n/s                 | 2.8                     | 0.19                 | n/s               | n/s                 |
| Hiab         | T-Duo 013-3       | 1.28                     | 0.84                 | 0.25 @ 4.2              | n/s                 | 2.8                     | 0.19                 | n/s               | n/s                 |
| Hiab         | T-HiDuo 013-3     | 1.28                     | 0.84                 | 0.25 @ 4.2              | n/s                 | 2.8                     | 0.2                  | n/s               | n/s                 |
| Atlas        | T 27 A27          | 1.32                     | 2.15                 | 0.4 @ 5.2               | n/s                 | 3.2                     | 0.23                 | 1.42              | n/s                 |
| Hiab         | T-CLX 013-2       | 1.32                     | 0.92                 | 0.36 @ 3.1              | n/s                 | 1.8                     | 0.16                 | n/s               | n/s                 |
| Hiab         | T-Duo 013-2       | 1.32                     | 0.92                 | 0.36 @ 3.1              | n/s                 | 1.8                     | 0.16                 | n/s               | n/s                 |
| Hiab         | T-HiDuo 013-2     | 1.32                     | 0.92                 | 0.36 @ 3.1              | n/s                 | 1.8                     | 0.17                 | n/s               | n/s                 |
| Hiab         | T-Duo 013-1       | 1.34                     | 1                    | 0.59 @ 2                | n/s                 | 0.8                     | 0.13                 | n/s               | n/s                 |
| Hiab         | T-HiDuo 013-1     | 1.34                     | 1.00                 | 0.59 @ 2                | n/s                 | 0.8                     | 0.14                 | n/s               | n/s                 |
| Atlas        | TC 13 C SF2       | 1.35                     | 0.99                 | 0.43 @ 2.66             | n/s                 | 2.66                    | 0.17                 | 1.41              | n/s                 |
| Atlas        | TC 13 C SF3       | 1.35                     | 0.99                 | 0.3 @ 3.46              | n/s                 | 3.466                   | 0.19                 | 1.41              | n/s                 |
| Hiab         | T-CLX 013-1       | 1.35                     | 1                    | 0.59 @ 2                | n/s                 | 0.8                     | 0.13                 | n/s               | n/s                 |
| Atlas        | T 27 A28          | 1.37                     | 2.03                 | 0.4 @ 5.2               | n/s                 | 4.2                     | 0.26                 | 1.45              | n/s                 |
| Hyva Crane   | HA 15 E1          | 1.41                     | 1.12                 | 0.32 @ 3.65             | n/s                 | n/s                     | 0.19                 | 1.24              | n/s                 |
| Ferrari      | 315 A 2           | 1.46                     | 1.15                 | 0.315 @ 3.67            | n/s                 | 2.79                    | 0.19                 | 0.72              | n/s                 |
| Amco Veba    | 602T-1 S          | 1.46                     | 1.18                 | 0.32 @ 3.47             | n/s                 | 1.9                     | 0.17                 | 1.25              | n/s                 |
| Amco Veba    | 602T-2 S          | 1.46                     | 1.1                  | 0.32 @ 3.67             | n/s                 | 2.79                    | 0.19                 | 1.25              | n/s                 |
| Auto Crane   | HC-3 <sup>2</sup> | 1.46                     | 1.45                 | n/s @ 9.14              | n/s                 | 9.14                    | 0.32                 | n/s               | n/s                 |
| PM           | PM 15.5           | 1.46                     | 2.75                 | 0.67 @ n/s              | n/s                 | n/s                     | 2.18                 | 2.22              | n/s                 |
| Palfinger    | PC 1500 A         | 1.53                     | 0.99                 | 0.27 @ 4.2              | n/s                 | 4.2                     | 0.16                 | 1.3               | n/s                 |
| Atlas        | T 27 A27L         | 1.53                     | 1.87                 | 0.35 @ 6                | n/s                 | 3.8                     | 2.24                 | 1.51              | n/s                 |
| Ferrari      | 317 A 1           | 1.57                     | 1.32                 | 0.32 @ 3.67             | n/s                 | 1.9                     | 0.17                 | 0.67              | n/s                 |
| Airone       | A 20 S 3          | 1.57                     | 0.18                 | n/s @ 8.6               | n/s                 | 5.4                     | 0.33                 | 1.52              | n/s                 |
| Airone       | A 20 ST-S 3       | 1.57                     | 0.17                 | n/s @ 6.6               | n/s                 | 5.4                     | 0.33                 | 1.52              | n/s                 |
| Maxilift     | m 150.1 H         | 1.57                     | n/s                  | 0.7 @ 2.08              | n/s                 | 2.08                    | 1.65                 | n/s               | n/s                 |
| Maxilift     | m 150.2 H         | 1.57                     | n/s                  | 0.48 @ 3.01             | n/s                 | 3.01                    | n/s                  | n/s               | n/s                 |
| Maxilift     | ML 150.1          | 1.57                     | 1.3                  | 0.48 @ 3.01             | n/s                 | 3.01                    | 0.17                 | 1.32              | n/s                 |
| Maxilift     | ML 150.2          | 1.57                     | 1.3                  | 0.48 @ 3                | n/s                 | 3                       | 0.18                 | 1.32              | n/s                 |
| Maxilift     | ML 150.3          | 1.57                     | 1.23                 | 0.35 @ 4                | n/s                 | 4                       | 0.19                 | 1.32              | n/s                 |
| Atlas        | T 15 A26          | 1.57                     | 0.99                 | 0.48 @ 3.01             | n/s                 | 2.08                    | 0.17                 | 1.36              | n/s                 |
| Atlas        | T 15 A27          | 1.57                     | 0.99                 | 0.35 @ 4                | n/s                 | 3.01                    | 0.18                 | 1.36              | n/s                 |
| Atlas        | T 15 A28          | 1.57                     | 0.99                 | 0.25 @ 5                | n/s                 | 4                       | 0.19                 | 1.36              | n/s                 |
| IMT          | 1015              | 1.60                     | 1.45                 | 0.65 @ 4.6              | 4.9                 | 2.4                     | 0.3                  | 0.66              | 6                   |
| Atlas        | T 27 A28L         | 1.60                     | 1.77                 | 0.35 @ 6                | n/s                 | 5                       | 0.27                 | 1.52              | n/s                 |
| HMF          | 200-T1            | 1.69                     | 1.2                  | 0.25 @ 3.5              | n/s                 | 2.1                     | 0.19                 | 1.57              | n/s                 |
| HMF          | 200-T2            | 1.69                     | 1.2                  | 0.25 @ 3.5              | n/s                 | 3                       | 0.22                 | 1.65              | n/s                 |

| Manufacturer | Model               | Tonne-Metre<br>Moment<br>(t-m) | Lifting<br>Capacity<br>(t) | Load @ Max<br>Radius<br>(t@m) | Max Hook<br>Height<br>(m) | Powered<br>Boom Length<br>(m) | Installed<br>Weight<br>(t) | Folded<br>Height<br>(m) | Power<br>Required<br>(kW) |
|--------------|---------------------|--------------------------------|----------------------------|-------------------------------|---------------------------|-------------------------------|----------------------------|-------------------------|---------------------------|
| Airone       | A 20 S 2            | 1.69                           | 0.2                        | n/s @ 6.7                     | n/s                       | 5.4                           | 0.31                       | 1.52                    | n/s                       |
| Airone       | A 20 ST-S 2         | 1.69                           | 0.18                       | n/s @ 6.7                     | n/s                       | 5.4                           | 0.31                       | 1.52                    | n/s                       |
| Airone       | A 20 TR-S 2         | 1.69                           | 0.18                       | n/s @ 6.7                     | n/s                       | 5.4                           | 0.28                       | 1.52                    | n/s                       |
| Fassi        | M15A.11 Teleskop    | 1.69                           | 1.3                        | 0.39 @ 3.95                   | n/s                       | 2.1                           | 0.19                       | 1.37                    | n/s                       |
| Fassi        | M15A.12 Teleskop    | 1.69                           | 1.3                        | 0.39 @ 3.95                   | n/s                       | 3                             | 0.2                        | 1.37                    | n/s                       |
| PM           | PM 15525 + J12      | 1.80                           | n/s                        | n/s @ n/s                     | n/s                       | n/s                           | 2.28                       | 2.22                    | n/s                       |
| Maxilift     | m 180.2 H           | 1.91                           | n/s                        | 0.57 @ 3.01                   | n/s                       | 3.01                          | 0.18                       | n/s                     | n/s                       |
| Maxilift     | m 180.3 H           | 1.91                           | n/s                        | 0.42 @ 4                      | n/s                       | 4                             | 0.19                       | n/s                     | n/s                       |
| Maxilift     | ML 180.2            | 1.91                           | 1.5                        | 0.57 @ 3                      | n/s                       | 3                             | 0.18                       | 1.32                    | n/s                       |
| Maxilift     | ML 180.3            | 1.91                           | 1.45                       | 0.42 @ 4                      | n/s                       | 4                             | 0.19                       | 1.32                    | n/s                       |
| Atlas        | T 18 A27            | 1.91                           | 1.5                        | 0.42 @ 4                      | n/s                       | 4.01                          | 0.18                       | 1.32                    | n/s                       |
| Atlas        | T 18 A28            | 1.91                           | 1.45                       | 0.28 @ 5                      | n/s                       | 4                             | 0.19                       | 1.32                    | n/s                       |
| Hiab         | T-CLX 018-2         | 2.02                           | 1.54                       | 0.61 @ 3.1                    | n/s                       | 3.1                           | 0.21                       | n/s                     | n/s                       |
| Hiab         | T-Duo 018-2         | 2.02                           | 1.54                       | 0.61 @ 3.1                    | n/s                       | 3.1                           | 0.21                       | n/s                     | n/s                       |
| Hiab         | T-HiDuo 018-2       | 2.02                           | 1.54                       | 0.61 @ 3.1                    | n/s                       | 3.1                           | 0.21                       | n/s                     | n/s                       |
| Maxilift     | m 150.3 H           | 2.14                           | n/s                        | 0.35 @ 4                      | n/s                       | 4                             | 0.19                       | n/s                     | n/s                       |
| Hiab         | T-CLX 018-1         | 2.14                           | 1.7                        | 0.99 @ 2                      | n/s                       | 2                             | 0.18                       | n/s                     | n/s                       |
| Hiab         | T-CLX 018-3         | 2.14                           | 1.42                       | 0.42 @ 4.2                    | n/s                       | 4.2                           | 0.24                       | n/s                     | n/s                       |
| Hiab         | T-Duo 018-1         | 2.14                           | 1.7                        | 0.99 @ 2                      | n/s                       | 2                             | 0.18                       | n/s                     | n/s                       |
| Hiab         | T-Duo 018-3         | 2.14                           | 1.42                       | 0.42 @ 4.2                    | n/s                       | 4.2                           | 0.24                       | n/s                     | n/s                       |
| Hiab         | T-HiDuo 018-1       | 2.14                           | 1.7                        | 0.99 @ 2                      | n/s                       | 2                             | 0.18                       | n/s                     | n/s                       |
| Hiab         | T-HiDuo 018-3       | 2.14                           | 1.42                       | 0.42 @ 4.2                    | n/s                       | 4.2                           | 0.24                       | n/s                     | n/s                       |
| Copma 2000   | 24T.3               | 2.23                           | 1                          | 0.31 @ 5.58                   | n/s                       | 5.58                          | 0.37                       | 1.61                    | n/s                       |
| Pesci        | SE 24 T             | 2.23                           | 1                          | 0.31 @ 5.58                   | n/s                       | n/s                           | 0.39                       | 1.61                    | n/s                       |
| HMF          | 250-T2              | 2.25                           | 1.67                       | 0.45 @ 4.1                    | n/s                       | 3.2                           | 0.24                       | 1.68                    | n/s                       |
| Ferrari      | 322 A 3             | 2.25                           | 1.27                       | 0.29 @ 5.13                   | n/s                       | 4.17                          | 0.26                       | 0.87                    | n/s                       |
| Amco Veba    | 603T-1 S            | 2.25                           | 1.59                       | 0.4 @ 4.14                    | n/s                       | 2.17                          | 0.22                       | 1.53                    | n/s                       |
| Amco Veba    | 603T-2 S            | 2.25                           | 1.49                       | 0.4 @ 4.14                    | n/s                       | 3.18                          | 0.24                       | 1.53                    | n/s                       |
| Amco Veba    | 603T-3 S            | 2.25                           | 1.27                       | 0.29 @ 5.13                   | n/s                       | 4.17                          | 0.26                       | 1.53                    | n/s                       |
| Hyva Crane   | HA 22 E3            | 2.25                           | 1.29                       | 0.29 @ 5.11                   | n/s                       | n/s                           | 0.26                       | 1.52                    | n/s                       |
| Copma 2000   | 24T.2               | 2.26                           | 1                          | 0.47 @ 4.18                   | n/s                       | 4.18                          | 0.37                       | 1.61                    | n/s                       |
| Ferrari      | 531 A 3             | 2.36                           | 1.23                       | 0.22 @ 8.75                   | n/s                       | 7.35                          | 0.52                       | 1.84                    | n/s                       |
| Fassi        | F 26 A 0.23 active  | 2.36                           | 1                          | 0.2 @ 8.05                    | n/s                       | 6.8                           | 0.47                       | 1.5                     | n/s                       |
| Fassi        | M 20A.11 Teleskop   | 2.36                           | 1.7                        | 0.42 @ 5                      | n/s                       | 2.2                           | 0.2                        | 1.53                    | n/s                       |
| Fassi        | M 20A.12 Teleskop   | 2.36                           | 1.7                        | 0.42 @ 5                      | n/s                       | 3.1                           | 0.21                       | 1.53                    | n/s                       |
| Fassi        | M 20A.13 Teleskop   | 2.36                           | 1.6                        | 0.41 @ 5                      | n/s                       | 4.05                          | 0.24                       | 1.53                    | n/s                       |
| Pesci        | FS 24Z P            | 2.42                           | 0.73                       | 0.28 @ 6.5                    | n/s                       | n/s                           | 0.62                       | 2.15                    | n/s                       |
| Copma 2000   | 24T.1               | 2.43                           | 1                          | 0.8 @ 2.8                     | n/s                       | 2.8                           | 0.33                       | 1.61                    | n/s                       |
| Fassi        | F 26 A 0.22 active  | 2.47                           | 1                          | 0.2 @ 8.05                    | n/s                       | 5.5                           | 0.43                       | 1.5                     | n/s                       |
| Maxilift     | m 230.2 H           | 2.47                           | n/s                        | 0.68 @ 3.2                    | n/s                       | 3.2                           | 0.23                       | n/s                     | n/s                       |
| Maxilift     | m 230.3 H           | 2.47                           | n/s                        | 0.5 @ 4.2                     | n/s                       | 4.2                           | 0.26                       | n/s                     | n/s                       |
| Maxilift     | ML 230.2            | 2.47                           | 1.8                        | 0.6 @ 3.2                     | n/s                       | 3.2                           | 0.23                       | 1.42                    | n/s                       |
| Maxilift     | ML 230.3            | 2.47                           | 1.8                        | 0.5 @ 4.2                     | n/s                       | 4.2                           | 0.26                       | 1.42                    | n/s                       |
| Atlas        | T 23 A27            | 2.47                           | 1.8                        | 0.5 @ 4.2                     | n/s                       | 3.2                           | 0.23                       | 1.42                    | n/s                       |
| Atlas        | T 23 A28            | 2.47                           | 1.8                        | 0.35 @ 5.2                    | n/s                       | 4.2                           | 0.26                       | 1.45                    | n/s                       |
| Ferrari      | 326 A 3             | 2.50                           | 1.57                       | 0.41 @ 5.14                   | n/s                       | 4.19                          | 0.3                        | 0.98                    | n/s                       |
| Pesci        | FS 24Z              | 2.56                           | 0.78                       | 0.4 @ 5.3                     | n/s                       | n/s                           | 0.55                       | 1.84                    | n/s                       |
| Fassi        | F 26 A 0.21 active  | 2.59                           | 1                          | 0.2 @ 8.05                    | n/s                       | 4.25                          | 0.39                       | 1.5                     | n/s                       |
| PM           | PM 2.8              | 2.59                           | 0.99                       | 0.32 @ 7.2                    | n/s                       | n/s                           | 0.45                       | 1.54                    | n/s                       |
| Atlas        | TC 23 C SF2         | 2.64                           | 1.82                       | 0.72 @ 3.03                   | n/s                       | 3.03                          | 0.23                       | 1.67                    | n/s                       |
| Atlas        | TC 23 C SF3         | 2.64                           | 1.7                        | 0.53 @ 4.03                   | n/s                       | 4.03                          | 0.26                       | 1.67                    | n/s                       |
| HMF          | 270-K3              | 2.70                           | 0.78                       | 0.33 @ 6.9                    | n/s                       | 7                             | 0.48                       | 1.53                    | n/s                       |
| Fassi        | F 30 CY 0.23 active | 2.70                           | 1                          | 0.25 @ 7.55                   | n/s                       | 6.3                           | 0.45                       | 1.5                     | n/s                       |
| Hiab         | T-CLX 023-2         | 2.70                           | 1.62                       | 0.7 @ 3.4                     | n/s                       | 1.9                           | 0.26                       | n/s                     | n/s                       |
| Hiab         | T-CLX 023-3         | 2.70                           | 1.6                        | 0.52 @ 4.4                    | n/s                       | 2.9                           | 0.3                        | n/s                     | n/s                       |
| Hiab         | T-Duo 023-2         | 2.70                           | 1.62                       | 0.7 @ 3.4                     | n/s                       | 1.9                           | 0.26                       | n/s                     | n/s                       |
| Hiab         | T-Duo 023-3         | 2.70                           | 1.6                        | 0.52 @ 4.4                    | n/s                       | 2.9                           | 0.3                        | n/s                     | n/s                       |
| Hiab         | T-HiDuo 023-2       | 2.70                           | 1.62                       | 0.7 @ 3.4                     | n/s                       | 1.9                           | 0.27                       | n/s                     | n/s                       |
| Hiab         | T-HiDuo 023-3       | 2.70                           | 1.6                        | 0.52 @ 4.4                    | n/s                       | 2.9                           | 0.31                       | n/s                     | n/s                       |
| Palfinger    | PK 2900             | 2.75                           | 0.99                       | 0.64 @ 3.9                    | n/s                       | 3.9                           | 0.37                       | 1.59                    | n/s                       |
| Palfinger    | PK 2900 A           | 2.75                           | 0.99                       | 0.47 @ 5.2                    | n/s                       | 5.1                           | 0.41                       | 1.59                    | n/s                       |
| Palfinger    | PK 2900 B           | 2.75                           | 0.99                       | 0.35 @ 6.4                    | n/s                       | 6.3                           | 0.43                       | 1.59                    | n/s                       |
| Copma 2000   | 28T.4               | 2.80                           | 0.83                       | 0.3 @ 7.43                    | n/s                       | 7.43                          | 0.45                       | 1.76                    | n/s                       |
| Pesci        | SE 28 T             | 2.80                           | 0.83                       | 0.3 @ 7.43                    | n/s                       | n/s                           | 0.45                       | 1.76                    | n/s                       |



# Goldhofer

MADE FOR YOUR MISSION



## WORLD PREMIERE – THE NEW ARCUSPK UNBEATABLE FLEXIBILITY

### THE VEHICLE AT A GLANCE

- » Steering system of friction and force-steered pendular axles (patent submitted)
- » Low loading height of 790 mm
- » Lowest deadweight in its class on the market
- » Easier operation through »SmartControl«
- » Loading of front bogie onto rear deck without use of additional equipment

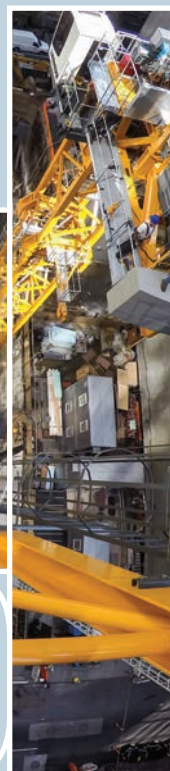


[WWW.GOLDHOFER.COM](http://WWW.GOLDHOFER.COM)



# THE WORLD CRANE GUIDE

# 2018-19



## CONTACT DETAILS

|                                |            |
|--------------------------------|------------|
| <b>MANUFACTURERS</b>           | <b>134</b> |
| <b>COMPONENTS AND SERVICES</b> | <b>137</b> |
| ALTERNATIVE LIFTING            | 137        |
| ASSOCIATIONS                   | 137        |
| BELOW THE HOOK                 | 138        |
| FALL PROTECTION                | 139        |
| HYDRAULICS                     | 139        |
| LIFTING SERVICES               | 139        |
| OEM PRODUCTS                   | 144        |
| OPERATOR ASSISTANCE DEVICES    | 146        |
| REMOTE CONTROLS                | 148        |
| ROPE                           | 151        |



**ABUS KRANSYSTEME GMBH**

Sonnenweg 1, Magdeburg  
Gummersbach, 51601  
Germany  
+49 226 137312  
www.abus-kransysteme.de

**AKER SOLUTIONS ASA**

PO Box 169  
NO-1325 Lysaker  
Norway  
+47 67 51 30 00  
www.akersolutions.com

**AKERBERGS MASKINER A/S**

Mars Alle 38, Box 295  
Horsens, 8700  
Denmark  
+45 75 641777  
www.akerbergs.dk

**ALTEC INDUSTRIES INC**

210 Inverness Center Drive  
Birmingham,  
Alabama, 35242  
USA  
+1 205 991 7733  
www.altec.com

**AMCO VEBA (H.C.E.) SRL**

Via Einstein 4  
Poviglio  
Reggio Emilia, 42028  
Italy  
+39 052 2408011  
www.amcoveba.it

**AMERICAN & OHIO  
LOCOMOTIVE CRANE**

3540 Hoffman Road East  
St Paul,  
Minnesota, 55110  
USA  
+1 651 777 0105  
www.ipscranes.com

**ARCOMET**

Schoebroekstraat 40  
Paal – Beringen, 3583  
Belgium  
+32 (0)11 450950  
www.arcomet.com

**AUTO CRANE COMPANY**

4707 N. Mingo Road, Tulsa,  
Oklahoma, 74117  
USA  
+1 918 438 2760  
www.autocrane.com

**AUTOGU RIGO SPA**

Via Casetta 241/A,  
Domegliara  
Verona, 37015  
Italy  
+39 045 6861500  
www.rigo.com

**BENAZZATO GRU SPA**

Via S Stefano 103  
Oleggio, Novara,  
28047  
Italy  
+39 032 193535  
www.benazzatogru.it

**BRODERSON  
MANUFACTURING CORP**

1474 W 106th St  
Lenexa,  
Kansas, KS 66215  
USA  
+1 913 888 0606  
www.bmccranes.com

**CAMS INDUSTRIALE SA**

Strada San Michele 37  
Cailungo,  
Borgo Maggiore  
47893  
San Marino  
+378 (0)54 9988111  
www.camsind.com

**CASAGRANDE SPA**

Viale Venezia 97,  
Fontanafredda,  
Pordenone, 33074  
Italy  
+39 043 49941  
www.casagrandegroup.com

**LUIGI CATTANEO SPA**

Via Trieste 14  
Magnago,  
Milano, 20020  
Italy  
+39 033 1657132  
www.cattaneogru.it

**CKD MOBILNI JERABY  
(JOINT STOCK COMPANY)**

Politických veznu 1337  
274 01 Slany,  
Czech Republic  
+420 312 526210  
www.ckd-jeraby.cz

**CLARKE CHAPMAN**

Saltmeadows Road  
Gateshead,  
Tyne & Wear  
NE8 1SW  
UK  
+44 (0)191 477 2271  
www.clarkechapman.co.uk

**COMANSA SA**

Poligono Urbizkain,  
Ctra. de Aoiz 1,  
Huarte,  
Navarra, 31620  
Spain  
+34 (94) 8335020  
www.comansa.com

**CONDECTA AG**

Stegackerstrasse 6  
Winterthur, 8409  
Switzerland  
+41 (0)52 2337888  
www.conducta.ch

**COPMA (CPS SRL)**

Via Emilia 281, Castel  
Bolognese,  
Ravenna, 48014  
Italy  
+39 054 6653711  
www.copma-cranes.com

**CORMACH SRL**

Via Madonnina 27  
Montichiari,  
Brescia, 25018  
Italy  
+39 030 9656811  
www.cormach.it

**CORNELL & COMPANY INC**

224 Cornell Lane  
Westville, New Jersey,  
08093  
USA  
+1 856 7421900  
www.cornellcraneandsteel.com

**EDILGRU INTERNATIONAL SRL**

Via Genala 48,  
Soresina, 26015,  
Italy  
+39 037 4344391  
www.edilgru.com

**EFFER SPA**

Via IV Novembre 12  
Minerbio,  
Bologna, 40061  
Italy  
+39 051 4181211  
www.effer.com

**ESCORTS LTD INDIA**

15/5 Mathura Road  
Faridabad, 121003  
India  
+91 51 6832878  
www.escortsgroup.com

**EUROGRU AMICI SRL**

Via Pietro Micca 10  
Cento, 44042  
Italy  
+39 (0) 516935700  
www.eurogruamici.it

**FASSI GRU SPA**

Via Roma 110,  
Albino  
Bergamo, 24021  
Italy  
+39 035 776400  
www.fassi.com

**FAVELLE FAVCO CRANES**

Lot 586 Jalan Batu Tiga  
Lama,  
Klang 41300, Selangor,  
Malaysia  
+60 (0)3 33495465  
www.favellefavco.com

**FB GRU SRL**

Via XXV Aprile 58  
Valmadrera, 23868  
Italy  
+39 034 1581108  
www.fbgru.it

**FERRARI INTERNATIONAL  
2 SPA**

Via Emore Tirelli 26/A  
Reggio Emilia, 42100  
Italy  
+39 0522 2387  
www.ferrariint2.com

**FM GRU SRL**

Via Emilia 11, Pontenure  
Piacenza, 29010  
Italy  
+39 052 3510446  
www.fmgru.it

**FUWA**

2 Shuangyang Road  
Shuncheng District  
Fushun, Liaoning, 113126  
China  
+86 24 57642558  
www.cnfuwa.com

**GALIZIA SNC**

14034 Castello di Annone  
Asti,  
Italy  
+39 014 1401256  
www.galiziagru.com

**GOTTWALD**

(KONECRANES)  
Postfach 180343  
Düsseldorf, 40597  
Germany  
+49 (0)211 7102355  
www.gottwald.com

**GROVE (MANITOWOC)**

1565 Buchanan Trail East  
PO Box 21, Shady Grove  
Pennsylvania, 17256  
USA  
+1 717 5978121  
www.manitowoccranes.com

**GRU DALBE SRL**

Via Europa 84, Lonate  
Pozzolo, Venezia, 21015  
Italy  
+39 033 1668425  
www.grudalbe.com

**HEEREMA MARINE  
CONTRACTORS BV**

Vondellaan 47,  
Leiden, 2332  
Netherlands  
+31 071 5799000  
www.heerema.com

**HEILA GRU SRL**

Via Romana 34/6  
Poviglio,  
Reggio Emilia,  
42028  
Italy  
+39 0522 966 352  
www.heila.com

**HELMUT KEMPKE GMBH**

Bismarckstrasse 59  
Remscheid 42853  
Germany  
+49 (0)219 143440  
www.kuli.com

**HIAB**

PO Box 603,  
Hudiksvall, 82483  
Sweden  
+46 (650) 91198  
www.hiab.com

**SUMITOMO HEAVY  
INDUSTRIES CONSTRUCTION  
CRANES CO.**

6F Sumitomo Fudosan  
Ueno Bldg,  
9-3 Higashi Ueno 6 - chome,  
Taito-ku,  
Tokyo,  
110-0015  
Japan  
+81 (0)338 451384  
www.hsc-cranes.com/

**HØJBJERG MASKINFABRIK AS**

Oddervej 200,  
Højbjerg, 8270  
Denmark  
+45 (86) 270800  
www.hmf.dk/gb

**HUISMAN EQUIPMENT**

Admiraal Trompstraat 2  
Schiedam, 3115  
Netherlands  
+31 010 88070 2222  
www.huismanequipment.com

**IHI CONSTRUCTION  
MACHINERY LTD**

3174 Showa-machi  
Kanazawa-ku  
Yokohama,  
236-8611  
Japan  
+81 (0)357 148833  
www.ihikenki.co.jp

**IVANOVSKAYA MARKA  
(AUTOKRAN)**

1st Mytischinskaya Street  
3 Buld. 1,  
Moscow 129626  
Russia  
+7 495 7410140  
www.ivmarka.ru

**JASO EQUIPOS DE OBRAS SA**

Centra Madrid-Irún,  
Idiazabal, Gipuzkoa,  
20213  
Spain  
+34 943 187 000  
www.jaso.com

**JIN LONG EUROPE  
(YONGMAO)**

Lodewijck de Raetlaan 27  
8870 Izegem  
Belgium  
+32 (0)51 312 336  
www.jinlongeurope.com

**JOLLY CRANE SRL**

Via De Pisis 198/15,  
Zona Industriale,  
Mancasale,  
Reggio Emilia,  
42100  
Italy  
+39 052 2512727

**KATO WORKS CO LTD**

9-37 Higashi Ohi 1-chome  
Shinagawa Ku,  
Tokyo,  
140-0011  
Japan  
+81 3 3458 1115  
www.kato-works.co.jp/eng/

**KENZ CRANES BV**

Zuiddijk 400,  
Zaandam,  
1505 HE  
Netherlands  
+31 (0)75 6810421  
www.kenz-figee.com

**KOBELCO CRANES CO LTD**

17-1 Higashigotanda  
2-chome  
Shinagawa-ku, Tokyo  
Japan  
+81 3 5789 2121  
www.kobelco-cranes.com

**KONECRANES PLC**

P.O. Box 661,  
Koneenkatu 8  
Hyvinkaa,  
Uusimaa, 05801  
Finland  
+358 020 427 11  
www.konecranes.com

**KÖNIG BAUMASCHINEN  
VERTRIEB GMBH**

Mehrbachstrasse 2  
Asbach,  
53567  
Germany  
+49 (0)26 8344368  
www.koenig-krane.de

**KRANSERVICE  
RHEINBERG GMBH**

Vinckeweg 15  
47119 Duisberg  
Germany  
+49 (0) 203860540  
www.ksr-krane.de

**KRØLL CRANES AS**

Nordkranvej 2,  
Lyngby, 3540  
Denmark  
+45 48 187400  
www.krollcranes.dk

**LIEBHERR-WERK  
BIBERACH GMBH**

Hans Liebherr Strasse 45  
Biberach an der Riss,  
88400  
Germany  
+49 (0)7351 412326  
www.liebherr.com

**LIEBHERR-WERK  
EHINGEN GMBH**

Postfach 1361  
Ehingen  
89582  
Germany  
+49 (7391) 5023439  
www.liebherr.com

**LIEBHERR-WERK NENZING  
GMBH**

Dr. Hans Liebherr Strasse 1  
Nenzing,  
6710  
Austria  
+43 5525 606444  
www.liebherr.com

**LIFT SYSTEMS INC**

1505 7th Street,  
East Moline,  
Illinois, 61244  
USA  
+1 309 764 9842  
www.lift-systems.com

**LINK-BELT CONSTRUCTION  
EQUIPMENT COMPANY**

2651 Palumbo Drive  
Lexington,  
Kentucky, 40509  
USA  
+1 859 263 5200  
www.linkbelt.com

**LOCATELLI SPA**

Via Lombardia 32  
24030 Mapello (BG)  
Italy  
+39 035 4945066  
www.locatell Crane.com

**LOGLIFT JONSERED OY AB**

Tehdaskatu 7,  
Salo, 24101  
Finland  
+358 (0) 204552599  
www.loglift.com

**MAEDA SEISAKUSHO CO LTD**

1095 Onbegwa, Shinonoi  
Nagano  
388-8522  
Japan  
+81 (0)262 922228  
www.maesei.co.jp/global

**MANITEX**

3000 South Austin Avenue  
Georgetown,  
Texas  
78626, USA  
+1 512 942 3000  
www.manitex.com

**MANITOWOC CRANES**

2400 South 30th Street  
Manitowoc,  
Wisconsin, 54220,  
USA  
+1 920 6846621  
www.manitowoccranes.com

**MARCHETTI AUTOGRU SPA**

Via Caorsana 49  
Piacenza,  
29100, Italy  
+39 052 3573711  
www.marchetti.it

**MELONI SRL**

Centrada da Rancia 26  
Tolentino, Marche,  
62029,  
Italy  
+39 073 3203613  
www.meloni.it

**METALNA SRM**

Soška ulica 5,  
2000 Maribor,  
Slovenia  
+3862 450 13 00  
www.metalna-srm.si

**MKG MASCHINEN &  
KRANVERTRIEB GMBH**

PO Box 107520  
Bremen, 28075  
Germany  
+49 (0)42 1321406  
www.mkg-export.com

**NATIONAL (MANITOWOC  
CRANES)**

1565 Buchanan Trail East  
Shady Grove  
Pennsylvania, 17256,  
USA  
+1 717 597 8121  
www.manitowoccranes.com

**NCK CRAWLER CRANES**

Acquired in 2012 by Delden  
Cranes which offers parts  
and service.  
www.deldencranes.co.uk/  
nck-cranes/index

**NEXT HYDRAULICS SRL**

Via Mediterraneo 6  
Boretto, Reggio Emilia,  
42022,  
Italy  
+39 (0) 522963008  
www.nexthydraulics.com

**NIPPON SHARYO LTD**

1-1 Sanbonmatsu-cho  
Atsuta-ku, Nagoya,  
456-8691  
Japan  
+81 52 882 3328  
www.n-sharyo.co.jp

**ORMIG AUTOGRU SPA**

Piazzale Ormig,  
P.O. Box 63  
Ovada, Alessandria,  
15076,  
Italy  
+39 014 380051234  
www.ormig.com

**P & H MATERIAL HANDLING**

Part of Konecranes  
PO Box M-2015,  
Milwaukee,  
Wisconsin,  
53201,  
USA  
+1 (414) 7648523  
www.morriscranes.com

**PALFINGER AG**

Lamprechtshausener  
Bundesstrasse 8,  
Bergheim, Salzburg,  
5101,  
Austria  
+43 66222810  
www.palfinger.com

**PCT GROUP SALES LTD**

37 Dalsetter Avenue,  
Glasgow,  
G15 8TE  
UK  
+44 (0)141 944 4000  
www.pctgroup.co.uk

**PELLOBY ENGINEERING**

Halesfield 19,  
Telford,  
Shropshire,  
TF7 4QT  
UK  
+44 (0)1952 586626  
www.pelloby.com

**PM GROUP**

Via G. Verdi 22  
San Cesario, sul Panaro  
Modena,  
41018  
Italy  
+39 059 936811  
www.pm-group.eu

**POTAIN SAS  
(MANITOWOC CRANES)**

18 Rue de Charbonnières  
BP 173, Ecully,  
69130  
France  
+33 472 182040  
www.manitowoccranes.com

**RAIMONDI CRANES SPA**

Corso Garibaldi 253,  
Legnano  
Milano, 20025  
Italy  
+39 033 1548061  
www.raimondigru.it

**RB CRANES**

111 Station Road, Selston,  
Nottinghamshire,  
NG16 6FF,  
UK  
+44 (0)1773 811400  
www.rbcranes.co.uk

**RIGGERS MANUFACTURING  
COMPANY**

PO Box 506, Dixon,  
Illinois, 61021  
USA  
+1 815 2887626  
www.riggers.com

**GRUAS SAEZ**

Centra Beniajan,  
Apartado 92  
Beniajan, Murcia,  
30570, Spain  
+39 948 28 10 46  
www.gruassaez.com

**SANY**

38F Jinmao Tower  
88 Century Boulevard,  
Pudong, Shanghai,  
200121  
China  
+86 (0)21 50493179  
www.sanyglobal.com



### REMOTE CONTROLS

#### HETRONIC INTERNATIONAL

3000 N.W. 149th Street  
Oklahoma City  
Oklahoma 73134  
USA  
+1 405 749 1270  
www.hetronic.com

#### IKUSI SA

Paseo Miramon 170  
San Sebastian  
20009  
Spai  
+34 943 44 88 00  
www.ikusi.com

#### IMET SRL

Via Fornace, 8  
Sacile,  
33070  
Italy  
+39 0434 7878  
www.imet-electronics.com

#### ITOWA

Faraday 159, Terrassa  
Barcelona,  
8224  
Spain  
+34937339850  
www.itowa.com

#### JAY ELECTRONIQUE

Zac la Batie,  
Rue Champrond  
St Ismier,  
38334  
France  
+33 04 764 14400  
www.jay-electronique.fr

#### LEE'S HIGH-TEC ENT LTD

19 Ln 13 Weng Yuan Rd  
Taliao Hsiang,  
Kaohsiung,  
831  
Taiwan  
+886 7 812 5652

#### JR MERRITT CONTROLS INC

55 Sperry Avenue  
Stratford,  
Connecticut,  
6615  
USA  
+1 203 381 0100  
www.jrmerritt.com

#### MICROTRONICS INC

2270 Highway 54, Iola,  
Kansas,  
660749  
USA  
+1 620 365 8264  
www.microtronicsinc.net

#### MODULAR REMOTES

45 Sinclair Avenue  
Georgetown, Ontario  
L7G 4X4  
Canada  
+1 905 702 9456  
www.modularremotes.com

#### MOTORMAN SA

Poligono La Ferreria, C  
Ceramica, 1,  
Montcada I Reixac,  
8110  
Spain  
+34 93 575 3366  
www.motorman.es

#### NBB CONTROLS & COMPONENTS AG

Otto Hahn Strasse, 1-3  
Ölbronn-Dürrn,  
75248  
Germany  
+49 07237 9990  
www.nbb.de

#### OEM CONTROLS INC

10 Controls Drive  
Shelton  
Connecticut, 6484  
USA  
+1 203 929 8431  
www.oemcontrols.com

#### OMNEX CONTROL SYSTEMS INC

74-1883 Coast Meridian  
Road, Port Coquitlam,  
British Columbia  
V3C 6G5  
Canada  
+1 604 944 9247  
www.omnexcontrols.com

#### OTTO ENGINEERING INC

2 East Main Street  
Carpentersville,  
Illinois, 60110  
USA  
+1 847 428 7171  
www.ottoeng.com

#### PALFINGER AG

Franz Wolfram Scherer  
Strasse 24,  
Bergheim,  
Salzburg, 5101  
Austria  
+43 0662 46840  
www.palfinger.com

#### RAVIOLI SPA

Via Passo Pordoi 4, Milan,  
20139  
Italy  
+39 025 36301  
www.raviolispa.com

#### REMTRON

1916 West Mission Road  
Escondido,  
California, C92029  
USA  
+1 760 737 7800  
www.remtron.com

#### SCANRECO

INDUSTRIELEKTRONIK AB  
Box 47144,  
Stockholm, 100 74  
Sweden  
+46 08 556 32 800  
www.scanreco.se

#### TELE MAN LLC

12550 Biscayne Boulevard  
North Miami,  
Florida, 33181  
USA  
+1 305 459 0763

#### TELE RADIO AB

Datavägen, 21,  
Askim  
Göteborg 436 32  
Sweden  
+46 031 748 54 60  
www.tele-radio.com

### ROPE

#### AUGUST RICHARD DIETZ & SOHN GMBH & CO. KG (DIEPA)

Damaschkestrasse 30  
Neustadt bei Coburg,  
96465  
Germany  
+49 09568 9240  
www.diepa.de

#### BRIDON AMERICAN CORPORATION

C280 New Commerce  
Boulevard, Wilkes Barre  
Pennsylvania  
18706  
USA  
+1 800 521 5555  
www.bridon-bekaert.com

#### BRUNTON SHAW UK LTD

Sandy Lane, Worksop  
Nottinghamshire,  
S80 3ES  
UK  
+44 01909 537600  
www.brunton-shaw.co.uk

#### CASAR DRAHTSEILWERK SAAR GMBH

Casarstrasse 1,  
Kirkel, 66459  
Germany  
+49 068 41 80910  
www.casar.de

#### DSM DYNEEMA

Mauritslaan 49  
Urmond  
PO Box 1163  
Geleen  
6160 BD  
Netherlands  
www.dsm.com

#### DSR WIRE ROPE

Woosin Bldg. 7F, 145,  
Teheran-ro  
Gangnam-gu  
Seoul, 135-911  
South Korea  
www.dsr.com

#### ITALCABLES SPA

Via Fratelli Capponi 72  
Sarezzo,  
Brescia, 25068  
Italy  
+39 030 893011  
www.italcables.com

#### KISWIRE LTD

100-760 Fl  
Jangkoo Building 1  
Jangkoo Dong,  
Chung-ku  
Korea  
+82 02 316 6114  
www.kiswire.com

#### LANKHORST

TOUWFABRIEKEN BV  
Prinsengracht 2,  
Sneek, Friesland,  
8607  
Netherlands  
+31 515 487 654  
www.lankhorst-touwfabrieken.nl

#### LATCH & BATCHELOR LTD

Hay Mills,  
Birmingham,  
B25 8DW  
UK  
+44 0121 772 1386  
www.latchandbatchelor.co.uk

#### PFEIFER SEIL UND HEBETECHNIK GMBH

Dr Karl Lenz Strasse,  
66 Memmingen,  
87700  
Germany  
+49 08 331 937 163  
www.pfeifer.de

#### CARL STAHL

Postweg 41  
Süssen  
73079  
Germany  
www.carlstahl.com

#### TEUFELBERGER GMBH

Vogelweiderstrasse 50  
Wels,  
4600  
Austria  
+43 7242 4130  
www.teufelberger.com

#### VEROPE AG

St. Antons Gasse 4a  
Zug,  
6300  
Switzerland  
+41 41 72 80 880  
www.verope.com

#### WESTFÄLISCHE DRAHTINDUSTRIE GMBH (WDI) PYTHON

Seilerstrasse, 1-3  
Dortmund,  
44147  
Germany  
+49 0231 859 820  
www.wdi-python.de

#### WIRE ROPE CORPORATION OF AMERICA INC

609 North 2nd Street  
St Joseph, Missouri,  
64502  
USA  
+1 816 233 0287  
www.wrca.com



#### INTERNATIONAL CRANES AND SPECIALIZED TRANSPORT ON-LINE

You can read *International Cranes and Specialized Transport* on-line by registering to receive the magazine digitally – sign up at:

[www.khl.com/subs/icst](http://www.khl.com/subs/icst)

OR REGISTER ONLINE AT: [www.khl.com/subs/ICST](http://www.khl.com/subs/ICST)

## 1 CHOOSE YOUR MAGAZINE/S

**International Cranes and Specialized Transport** ☐

*Access International* ☐

*Access, Lift & Handlers* ☐

*American Cranes & Transport* ☐

*Construction Europe* ☐

*Construction Latin America (Spanish)* ☐

*Construction Latin America (Portuguese)* ☐

*Demolition & Recycling International* ☐

*International Construction* ☐

*International Construction Turkey (Turkish)* ☐

*International Rental News* ☐

*Cranes & Project Transport Turkey (Turkish)* ☐

## 2 CHOOSE YOUR E-NEWSLETTER/S

**World Crane Week** ☐

*KHL Crane Market* ☐

*Access International* ☐

*Access, Lift & Handlers* ☐

*Construction Latin America* ☐

*Demolition & Recycling International* ☐

*World Construction Week* ☐

*International Construction China (Chinese)* ☐

*International Rental News* ☐

## 3 ORGANISATION TYPE

Construction Contractor/Consultant ☐

Equipment Rental ☐

Energy / Petrochemical ☐

Specialized/Heavy Transport ☐

Industrial Establishment ☐

Airports / Ports / Docks / Offshore ☐

Manufacturer of Lifting Equipment ☐

Distributor / Agent / Equipment Sales ☐

Government/Defence/International Authority ☐

Public/Private Utilities ☐

Windpower ☐

Other (Please specify): \_\_\_\_\_

**POST TO:** KHL Group,  
Circulation, Southfields, Southview Road,  
Wadhurst, East Sussex, TN5 6TP, UK  
**E-MAIL:** [circulation@khl.com](mailto:circulation@khl.com)



## 4 YOUR DETAILS

Name: \_\_\_\_\_

Job title: \_\_\_\_\_

Company: \_\_\_\_\_

Address: \_\_\_\_\_

Town: \_\_\_\_\_

Country: \_\_\_\_\_

County/State: \_\_\_\_\_

Post code/Zip code: \_\_\_\_\_

e-mail: \_\_\_\_\_

## 5 Do you purchase or influence the purchase of construction equipment or services?

YES ☐

NO ☐

## 6 What is the annual turnover of your company (US\$ millions):

Under \$1 million ☐

\$1-3million ☐

\$3-5million ☐

\$5-20million ☐

\$20-100million ☐

Over \$100 million ☐

## 7 FORMAT OF MAGAZINE

PRINT ☐

DIGITAL ☐

PRINT & DIGITAL ☐

## 8 YOUR PREFERENCES

KHL Group Ltd will keep you up to date with industry insight, products and events relevant to you as a professional in the construction or power industry. If you do not wish to receive such information, please tick the selected boxes below.

e-mail ☐ Telephone ☐ Post ☐

KHL works with other companies in the construction and power industry and will contact you about their products and services.

**I would like to receive e-mails from KHL about other third party products** ☐

All e-mails will contain a link in the footer to enable you to unsubscribe at any time. For more information, please see our Privacy Policy: [www.khl.com/privacy-policy](http://www.khl.com/privacy-policy)

## 9 SIGN AND DATE:

**SIGNATURE:** \_\_\_\_\_

**DATE:** \_\_\_\_\_



# EVERYTHING YOU NEED TO REACH NEW HEIGHTS



CTT 182-8 Flat Top | Max lifting capacity of 8 t with 2 t at the end of the jib

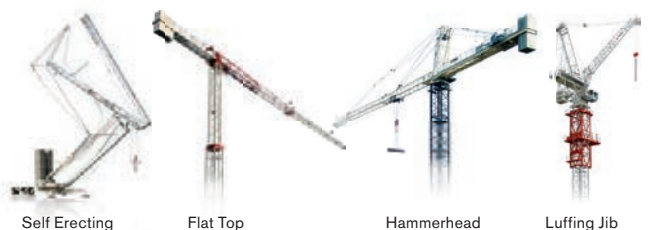
**With a range of features and styles, Terex tower cranes are ready for lifting duties, from small residential areas and crowded cities to infrastructure projects.**

## **Designed with you in mind:**

- ▶ Easy transport and quick setup
- ▶ Developed for the most demanding conditions
- ▶ Cab design focuses on operator comfort and ergonomics to reduce fatigue and increase productivity
- ▶ Customized jobsite planning by our experts

Contact us to learn  
how we can work for you.

**[www.terex.com/cranes](http://www.terex.com/cranes)**



Ask about our full range of tower cranes.



# TEREX®

## WORKS FOR YOU.™